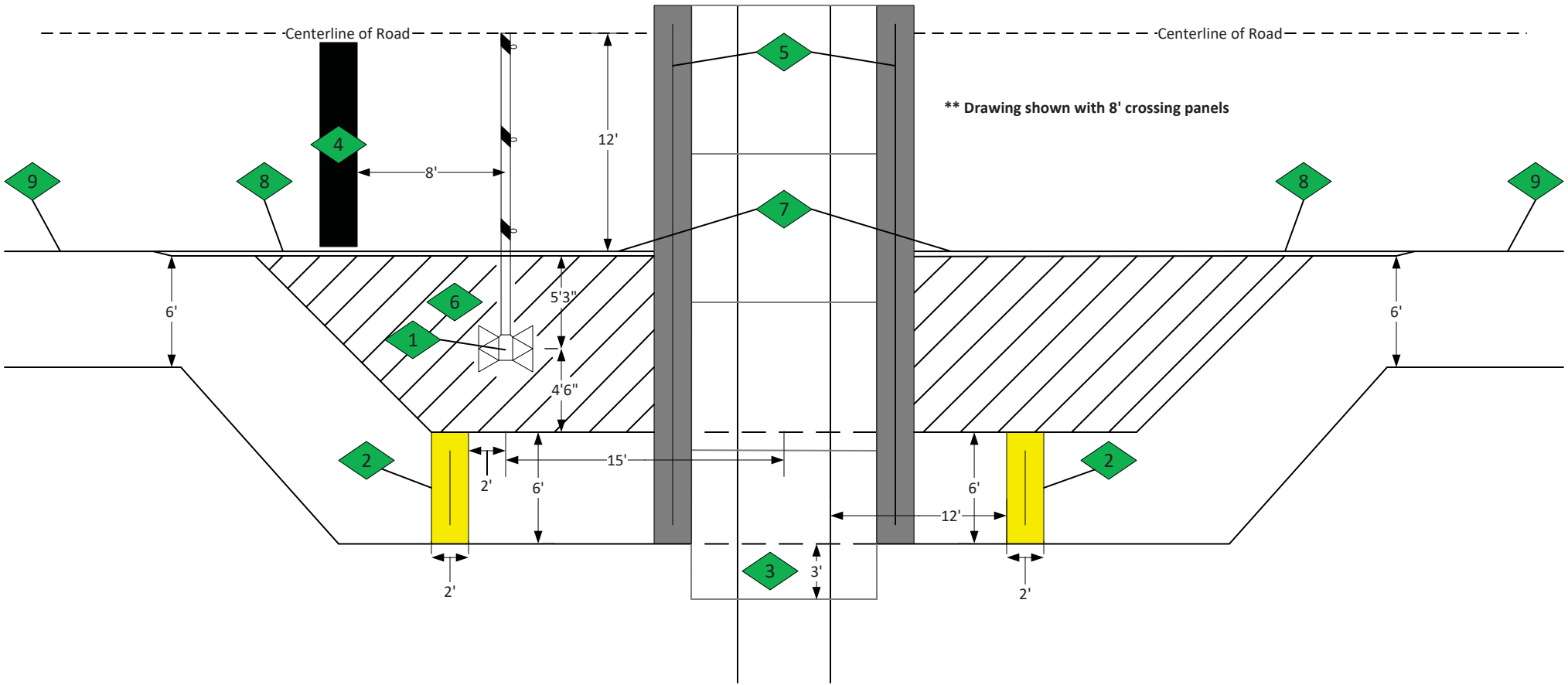


1	Vehicular device with gate arm. Standard: MUTCD 8C.02 & 8C.04
2	Min. 2' Detectable warning strip. Standard: MUTCD 8D.04
3	Min. 3' from edge of traveled way including shoulders or sidewalks. Standard: UP Standard Drawing 0304J
4	24" STOP LINE - 8' in advance of nearest Railroad Traffic Control Device. Standard: MUTCD 3B-16
5	Min. 24" strip of asphalt between crossing surface and roadway. Standard: UP Standard Drawing 0304J

6	Unpaved area – e.g. aggregate material around devices for maintenance access. Guidance: UP Maintenance
7	Min. 10' from center of track, tapered curb. Guidance: Standard Practice
8	6" non-mountable raised curb. Standard: MUTCD 8C-01
9	Mountable curb for maintenance access.. Guidance: UP Maintenance

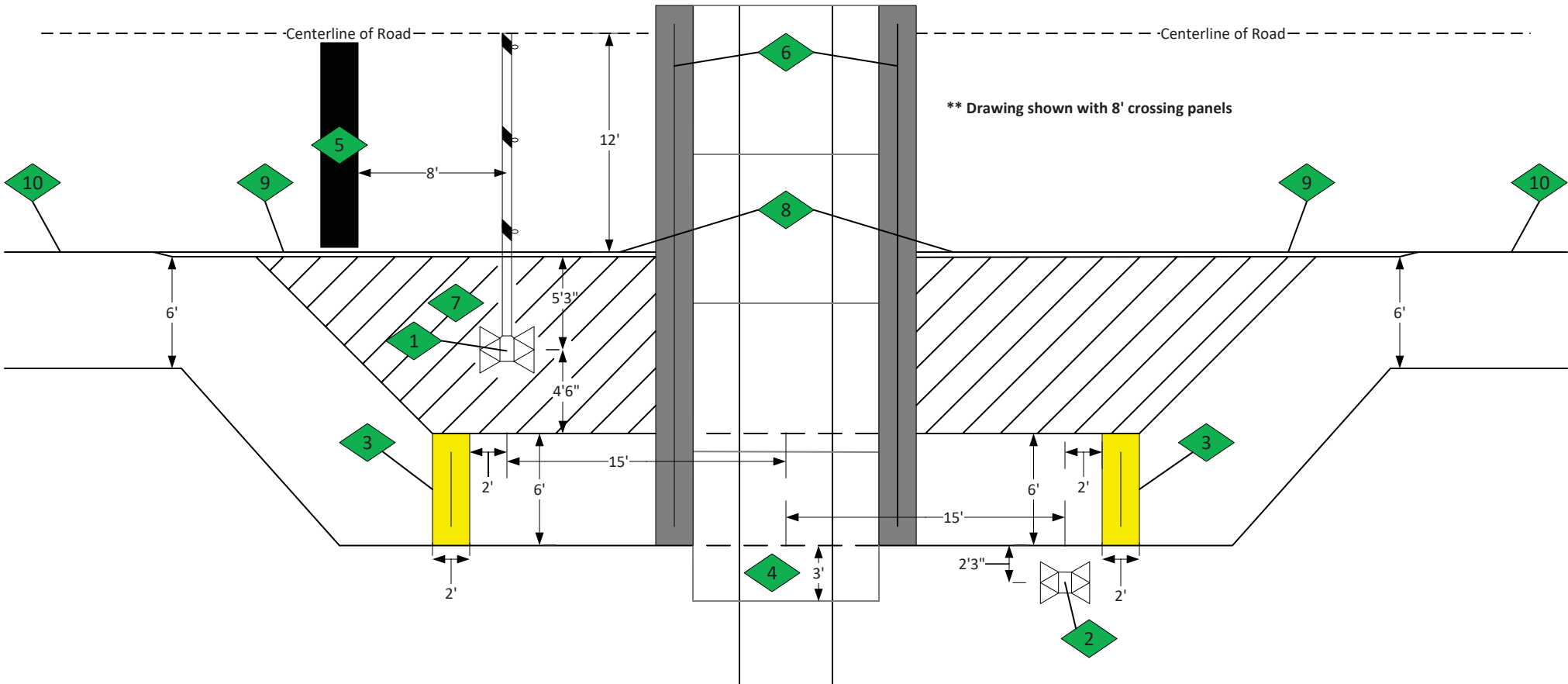


Guidance for Sidewalk Improvements

Disclaimer: The purpose of this document is to provide the design engineer with the guidelines for sidewalk improvements. This does not substitute the design engineer's specifications for a specific project but provides the basis of the standards, which the design engineer shall follow.

1	Vehicular device with gate arm. Standard: MUTCD 8C.02 & 8C.04
2	Pedestrian device. Standard: MUTCD 8D.06
3	Min. 2' Detectable warning strip. Standard: MUTCD 8D.04
4	Min. 3' from edge of traveled way including shoulders or sidewalks. Standard: UP Standard Drawing 0304J
5	24" STOP LINE - 8' in advance of nearest Railroad Traffic Control Device. Standard: MUTCD 3B-16

6	24" min. strip of asphalt between crossing surface and roadway. Standard: UP Standard Drawing 0304J
7	Unpaved area – e.g. aggregate material around devices for maintenance access. Guidance: UP Maintenance
8	Min. 10' from center of track, tapered curb. Guidance: Standard Practice
9	6" non-mountable raised curb. Standard: MUTCD 8C-01
10	Mountable curb for maintenance access.. Guidance: UP Maintenance



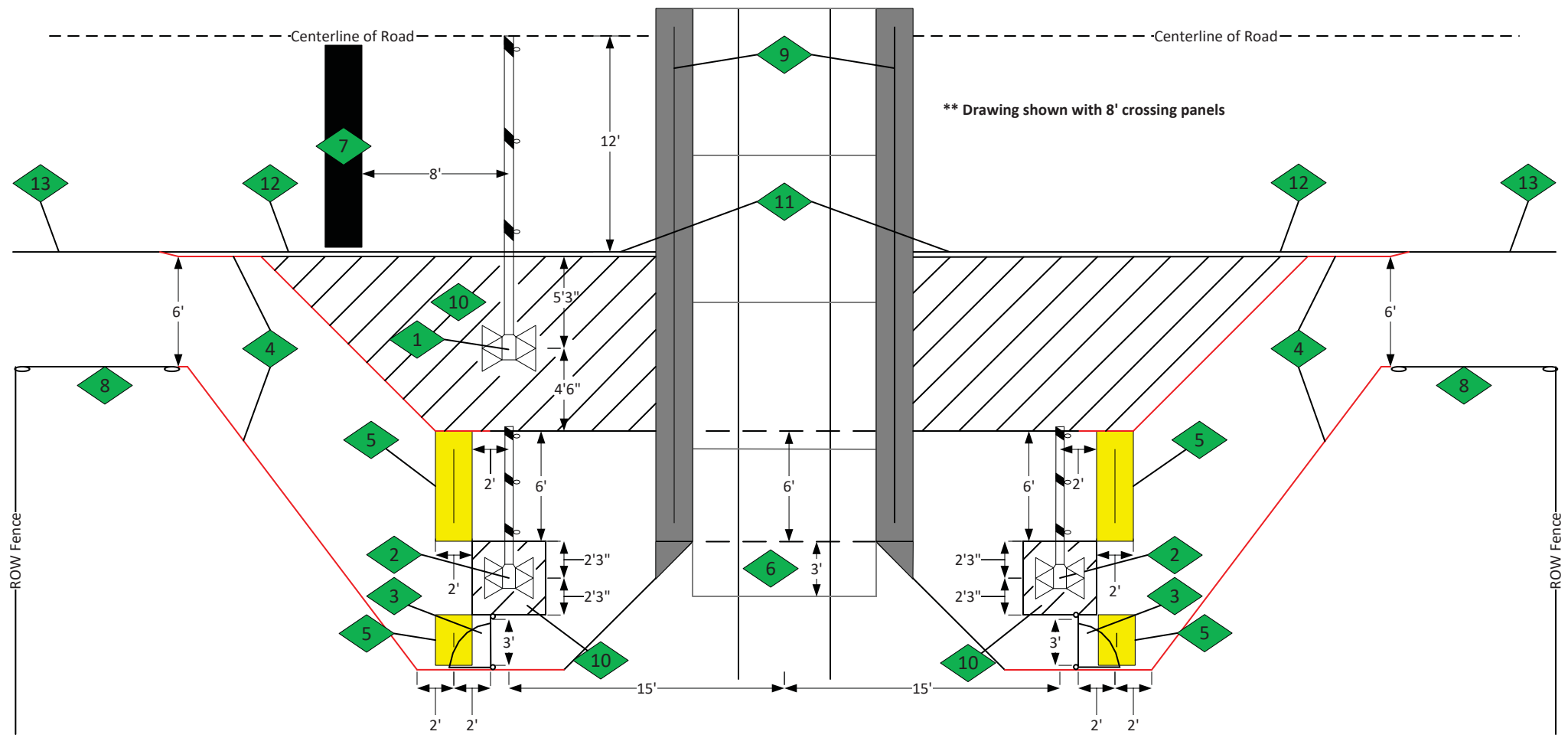
Guidance for Sidewalk Improvements w/ Off-Quadrant Pedestrian Device

Disclaimer: The purpose of this document is to provide the design engineer with the guidelines for sidewalk improvements w/ off-quadrant pedestrian device. This does not substitute the design engineer's specifications for a specific project but provides the basis of the standards, which the design engineer shall follow.

1	Vehicular device with gate arm. Standard: MUTCD 8C.02 & 8C.04
2	Pedestrian device with gate arm. Standard: MUTCD 8D.06
3	Pedestrian emergency exit gate. Guidance: Standard Practice
4	Pedestrian channelizing device – e.g. Steel tube rail. Installed no closer than 12' to CL. Guidance: UP Operation and Maintenance
5	Min. 2' Detectable warning strip. Standard: MUTCD 8D.04

6	Min. 3' from edge of way including shoulders or sidewalks. Standard: UP Standard Drawing 0304J
7	24" STOP LINE - 8' in advance of nearest Railroad Traffic Control Device. Standard: MUTCD 3B-16
8	Gate to provide UPRR vehicle access for maintenance. Standard: UP Standard Drawing 0076B
9	24" min. strip of asphalt between crossing surface and roadway. Standard: UP Standard Drawing 0304J
10	Unpaved area – e.g. aggregate material around devices for maintenance access. Guidance: UP Maintenance

11	Min. 10' from center of track, tapered curb. Guidance: Standard Practice
12	6" non-mountable raised curb. Standard: MUTCD 8C-01
13	Mountable curb for maintenance access.. Guidance: UP Maintenance



Guidance for Sidewalk Improvements w/ Pedestrian Gates

Disclaimer: The purpose of this document is to provide the design engineer with the guidelines for sidewalk improvements w/ gate arms and emergency exit routes. This does not substitute the design engineer's specifications for a specific project but provides the basis of the standards, which the design engineer shall follow.