

# SR 167 Master Plan

A planning and environmental linkage study

## Policy Advisory Committee Meeting #4

July 13, 2022

ROGER MILLAR, PE, FASCE, FAICP  
JULIE MEREDITH, PE  
ROBIN MAYHEW, AICP  
APRIL DELCHAMPS, AICP  
CHRIS BREILAND, PE  
LOREANA MARCIANTE  
AMY DANBERG  
HENRY YATES

SECRETARY OF TRANSPORTATION  
ASST. SECRETARY URBAN MOBILITY, ACCESS, AND MEGAPROGRAMS  
MANAGEMENT OF MOBILITY DIRECTOR  
PLANNING MANAGER  
SR 167 PROJECT MANAGER  
SR 167 MASTER PLAN EQUITY ANALYSIS LEAD  
SR 167 MASTER PLAN PARTNER & COMMUNITY ENGAGEMENT LEAD  
SR 167 MASTER PLAN EQUITY ADVISORY COMMITTEE FACILITATOR

# Agenda and objectives

## Objectives:

- Provide an update on Equity Advisory Committee process and feedback
- Provide a community engagement update
- Provide high level insights on tradeoffs from the results of scenario analysis
- Provide opportunity for feedback/discussion on tradeoffs to inform refined scenario development and analysis

## Agenda:

- Welcome and opening remarks
- Equity Advisory Committee update
- Community engagement update
- Scenario analysis
- Discussion
- Scenario refinement process
- Next steps

# Legislative Direction

## RCW 47.10.440

### Adoption of statewide goals to reduce annual per capita vehicle miles traveled by 2050

- To support the implementation of RCW [47.04.280](#) and [47.01.078](#)(4), the department shall adopt broad statewide goals to reduce annual per capita vehicle miles traveled by 2050 consistent with the stated goals of executive order 07-02. Consistent with these goals, the department shall:
- (1) Establish the following benchmarks using a statewide baseline of seventy-five billion vehicle miles traveled less the vehicle miles traveled attributable to vehicles licensed under RCW [46.16A.455](#) and weighing ten thousand pounds or more, which are exempt from this section:
  - (a) Decrease the annual per capita vehicle miles traveled by eighteen percent by 2020;**
  - (b) Decrease the annual per capita vehicle miles traveled by thirty percent by 2035; and**
  - (c) Decrease the annual per capita vehicle miles traveled by fifty percent by 2050;**

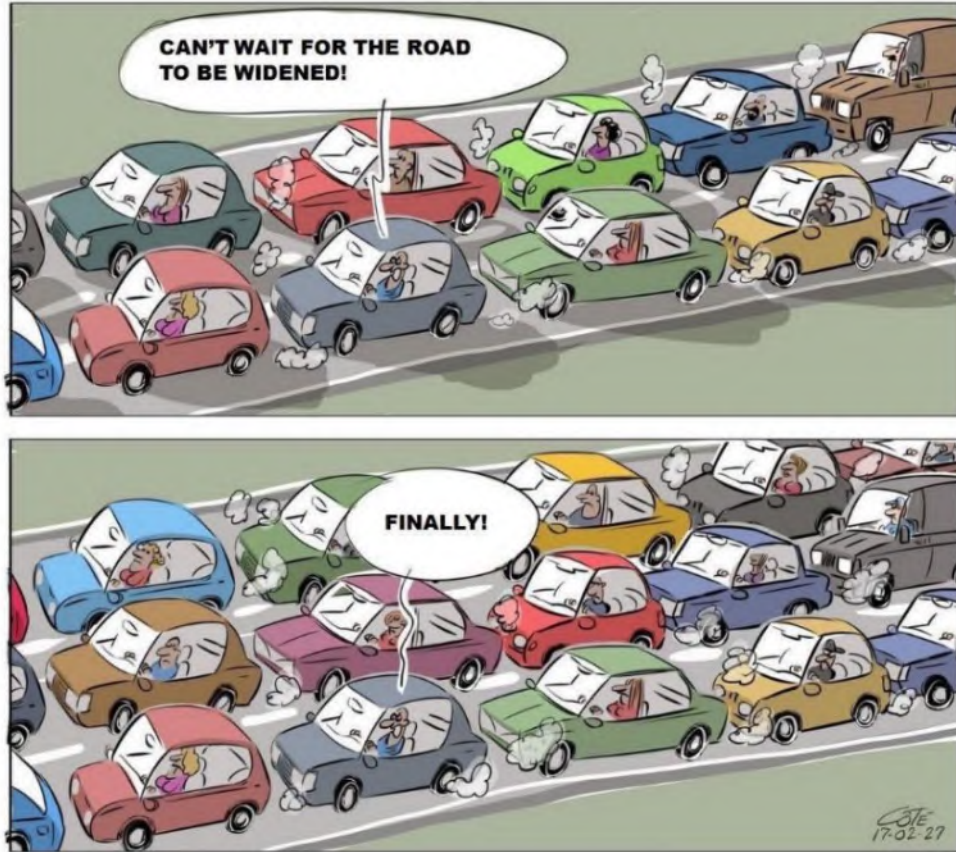
# The need for a resilient transportation system

- **Climate change** – wildfires, flooding, excessive heat, sea-level rise, extreme storm events
- **Disasters** – Cascadia subduction earthquake, infrastructure failure, cybersecurity threats
- **Equity** – making sure our transportation system is accessible to everyone; addressing negative effects of transportation on overburdened neighborhoods
- **Economy** – our population is growing, how will the transportation system keep up – so what new tools, modes help us manage travel? How can streets and roads support vibrant local economies?





## “Solving” Congestion Assumptions



Cartoon via @Brent Toderian on Twitter

### High-level analysis for the interstate system:

- Assumes no induced demand
- No growth in demand
- Does not address increased capacity needed on other state routes or local roads
- May not address costs or timing of full environmental impacts
- No additional transit or alternative modal options
- Current year costs (in 2017)

# A resilient response

- Get more out of what we have through system and demand management
- Link transportation and land use
  - Affordable housing and transportation choices
  - Make it safe and easy to shift short trips to walk/bike
  - Telecommuting
- Intelligent Transportation Systems
  - Automated vehicles/Advanced driver assistance systems
  - Mobility on demand/Mobility as a Service
  - Advanced air mobility



# A resilient response

- System expansion
  - Active Transportation
  - Public Transportation
  - Ultra High-Speed Ground Transportation
  - Emerging Aeronautics
  - Freight access
    - Supply chain
    - Package delivery





# The planning steps

Community and partner engagement

**Phase 1:  
Study  
planning**  
Aug – Nov  
2021

**Phase 2:  
Existing and  
future  
conditions**  
Nov 2021 –  
Feb 2022

**Phase 3:  
Develop and  
screen  
strategies**  
Feb – April  
2022

**Phase 4:  
Develop and  
evaluate  
multimodal  
scenarios**  
April – Nov  
2022

**Phase 5:  
Final report**  
Nov 2022 –  
March 2023

# Partner meeting schedule

## Meeting 1 November

- Review and discuss committee roles and responsibilities
- Draft purpose and need
- Study area approach
- Draft evaluation criteria

## Meeting 2 January/February

- Final purpose and need
- Final evaluation framework
- Initial project list

## Meeting 3 March

- Review existing conditions
- Define scenario development
- Community engagement update

## Meeting 4 June/July

- Review and discuss scenario analysis
- Community engagement update

## Meeting 5 October/November

- Present refined scenarios
- Community engagement update

## Meeting 6 January

- Provide recommended solution
- Community engagement update

## Meeting 7 March

- Review plan highlights
- Executive Summary
- Next steps

# Updates from the sandbox

## Legend

- Gateway SR 167 Completion Project
- SR 167 Master Plan
- SR 167 Toll Equipment Upgrade
- Southbound SR 167 Auxiliary Lane
- Southbound SR 167 ETL Extension
- Northbound SR 167 HOV & ETL Extension
- Tacoma to Puyallup Trail
- South Pierce County Corridor Study Area
- SR 512 Corridor Study Area
- Pierce County Canyon Road Regional Connection Project



# Equity Advisory Committee

# Equity Advisory Committee Meetings

## Meeting 1 February

- Study overview
- Roles and responsibilities
- Review community profile
- Discuss community engagement

## Meeting 2 April

- Community engagement
- Evaluation framework
- Equity analysis
- Project list update

## Meeting 3 June

- Confirm equity priority areas
- Project list development process
- Discuss transportation challenges
- Community engagement update

## Meeting 4 September

- Review and discuss scenario analysis
- Community engagement update

## Meeting 5 November

- Present refined scenarios
- Community engagement update

## Meeting 6 January

- Provide recommended solution
- Community engagement update

# Who attends the Equity Advisory Committee

## **EAC meeting participants:**

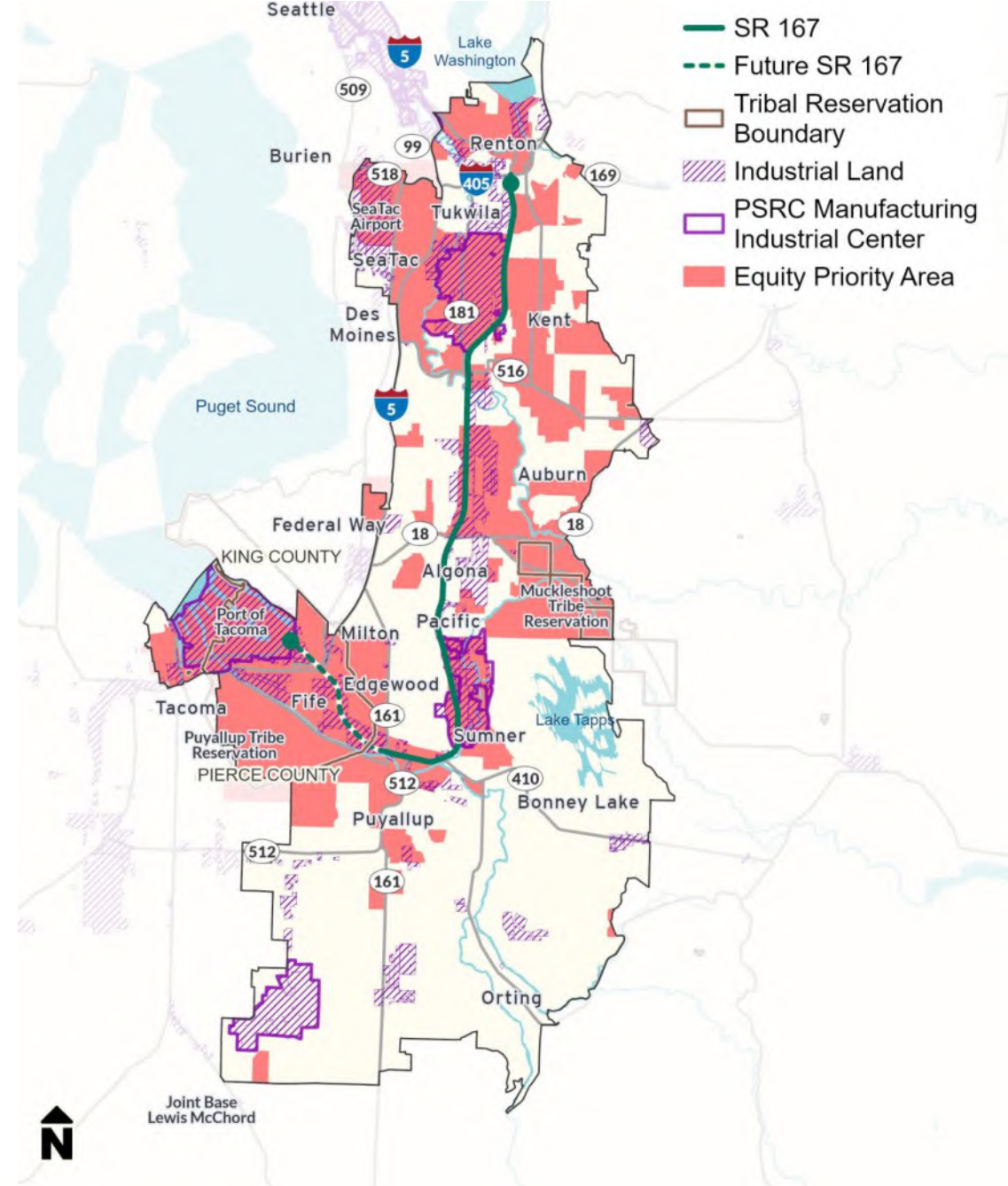
- African Community Housing & Development (Mtg.1, Mtg.2)
- Asian Counseling and Referral Service
- Atlantic Street Center (Mtg.1, Mtg.3)
- Center for Independence
- ForeverGreen Trails
- Futurewise (Mtg.2, Mtg.3)
- IDIC Filipino Senior & Family Services
- Muckleshoot Indian Tribe (Mtg.3)
- Orion Industries
- Puyallup Tribe of Indians (Mtg.1)
- Somali Community Services of Seattle
- Sound Generations (Hyde Shuttle)
- Tilth Alliance (Mtg.1, Mtg.3)
- 2 Renton Inclusion Task Force member

# What is an Equity Priority Area?

A geographic area that has a higher concentration of vulnerable or overburdened populations (identified through U.S. Census demographic data)

## Why is this important?

Identifying equity priority areas allows us to evaluate transportation scenarios (projects and strategies) are equitable in **maximizing benefits** and **minimizing impacts** to locations having the highest concentrations of vulnerable or overburdened populations.



# What did we hear?

## *Equity Priority Areas*

- The EAC did not add additional equity priority areas focused on where people live
- Outside where people live, the EAC focused on key destinations people will want to access
  - Consider Shopping Centers
    - Southcenter Mall was called out as an important destination for many communities and young people
    - South Hill Mall in Puyallup
    - Commons at Federal Way
    - The Outlet Collection in Auburn
  - King County Region Justice Center in Kent is another important destination for people who are incarcerated or need to get to court appointments
  - Consider key community and regional health centers – SeaMar, Healthpoint, Valley Medical Center (Renton, Auburn)



# What did we hear?

## *Transportation Challenges*

- Transit needs:
  - Lack of transit in Bonney Lake and Sumner
  - Need for connections to Bellevue from north Renton
  - More frequent transit options to access Muckleshoot Indian Reservation
  - Bus routes and times are challenging for people moving east – west
  - Second shift and evening shift bus service and access
  - Rural access to transit – make connections from their home to transit hubs
  - Public transit is consolidating bus trips and these local stops are important
    - do no remove
- Pedestrian
  - Proper intersection and way finding technology and infrastructure

# What did we hear?

## *Transportation Challenges*

- More access to essential destinations:
  - Farmer's Markets, parks and green spaces, Valley Medical Center in Renton and Auburn, King County court system,
  - To community garden locations (Hillside Church in Kent)
- On demand and bus services is missing from rural areas
- Safety:
  - Climate resiliency and consideration for evacuation routes (Bonney Lake)
- Funding:
  - Accessing federal funds; Federal grant requirements are difficult to navigate for smaller jurisdictions
  - Public willingness to pay for transit

# What did we hear?

*Transportation Projects – roadway, transit, bicycle, pedestrian*

- Transit
  - Mid-day Sounder service
  - More frequent transit service
  - Next bus arrival information
  - More frequency and availability for Access transit - tighter window on booking Access transit services
  - Keeping local routes intact with implementation of RapidRide – both KC Metro and Pierce Transit
  - Education to help community access and use public transit
  - Access to Kent Family Center and West Meeker Street in Kent
  - Access to International District and China Town from light rail and the bus

# What did we hear?

## *Transportation Projects – roadway, transit, bicycle, pedestrian*

- Pedestrian
  - More sidewalks (along SR 164, near Valley Medical Center in Renton)
  - Better lighting
  - Filling the gaps in the Interurban Trail (east west); providing access to other regional trails
  - Trail connection between White River Trail and Stewart Road path
  - Audible pedestrian signals at crossings near Valley Medical Center in Renton

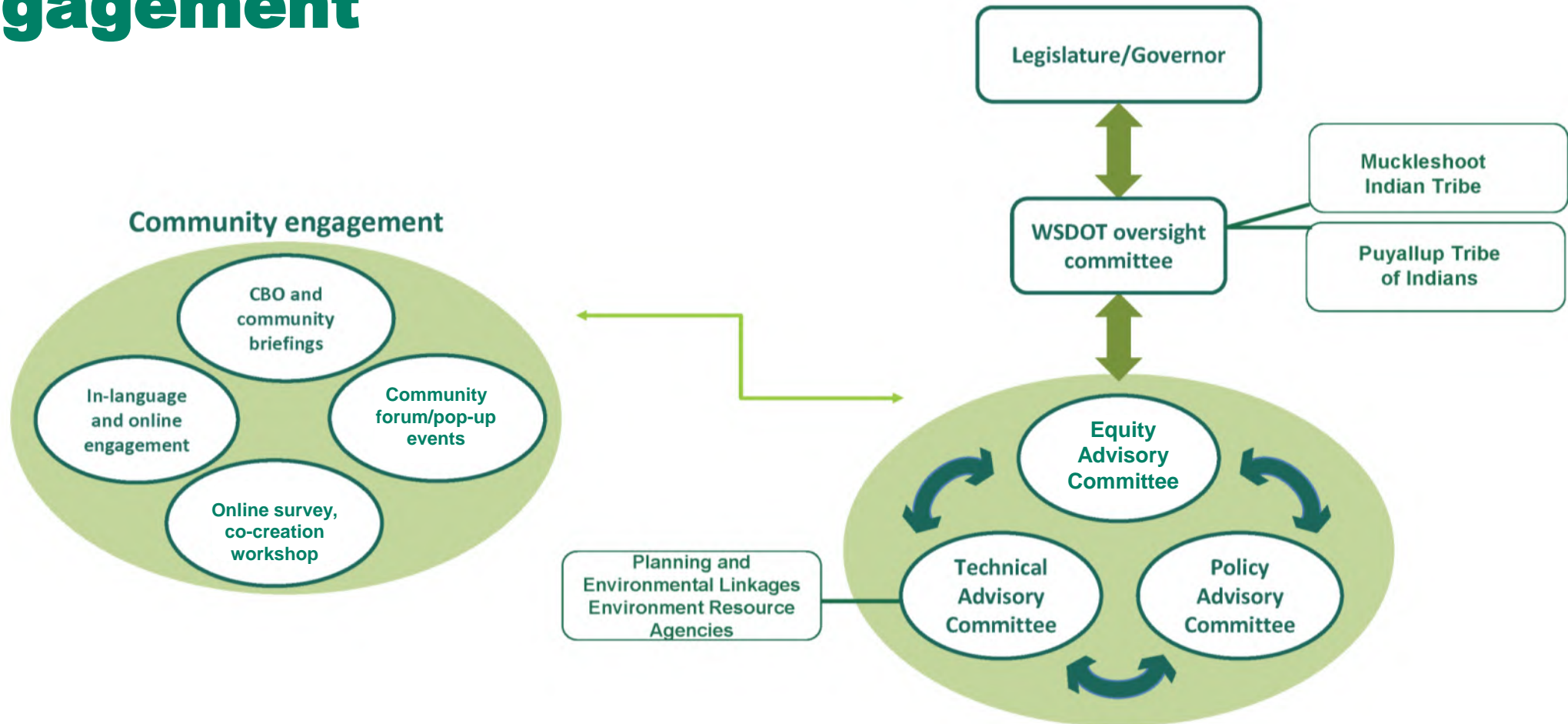
# What did we hear?

## *Transportation Projects – roadway, transit, bicycle, pedestrian*

- Roadway
  - Improving SR 18/SR 167 interchange – specifically going east on SR 18 to south SR 167
  - East Auburn Access Project
  - Access from SR 167 to Valley Medical Center in Renton
  - Solutions for evacuation on SR 162
  - White River Bridge on East Valley Highway
- Other
  - More community garden spaces along corridors
  - Replacing trees that are removed as part of projects

# Partner and Community Engagement

# SR 167 Master Plan - Partner and Community Engagement



# Online open house is available

## Online open house:

- Objective: Provide awareness for the Master Plan study and gather input from surrounding communities
- Available in 7 languages
- Phone in option
- Survey and feedback form

## Notifications:

- Online and print advertisements
- Postcard –58,000 mailing addresses
- Press release
- Email update
- Social media toolkit for local jurisdiction and CBO partners

### SR 167 Online Open House & Survey

WSDOT is studying options to improve the movement of people and goods along SR 167. The study area includes communities from Renton to Tacoma. If you live, work, or travel this area, visit the online open house to learn about the planning process and share your ideas by taking our survey. The online open house is available from June 29-July 29, 2022.

**SR 167 在线开放日及问卷调查**  
WSDOT 正在研究改善 SR 167 沿线的人员和货物流动的方案。研究区包括从伦顿 (Renton) 到塔科马 (Tacoma) 的社区。如果您在该地区生活、工作或出行, 请访问在线开放日来了解规划过程并参加我们的问卷调查分享您的想法。在线开放日的开放时间为 2022 年 6 月 29 日至 7 月 29 日。

**Онлайн день открытых дверей и опрос, посвященный вопросам развития внутриштатного шоссе 167 (SR 167)**

Департамент транспорта штата Вашингтон (WSDOT) изучает варианты улучшения передвижения людей и транспортировки грузов по внутриштатному шоссе 167 (SR 167). В районе проведения исследования, от г. Рентон (Renton) до г. Такома (Tacoma), проживает большое количество людей. Если Вы проживаете или работаете в этом районе, или же совершаете поездки по его территории, мы приглашаем Вас посетить наш онлайн день открытых дверей, чтобы получить информацию о планировании транспортных решений и поделиться своими отзывами, приняв участие в нашем опросе. Онлайн день открытых дверей будет проводиться с 29 июня по 29 июля 2022 года.

**Página web interactiva y encuesta de la SR 167**  
El WSDOT está estudiando opciones para mejorar la circulación de personas y mercancías a lo largo de la SR 167. El área de estudio incluye comunidades desde Renton hasta Tacoma. Si usted vive, trabaja o viaja por esta zona, visite la página web interactiva del proyecto para conocer el proceso de planificación y compartir sus ideas realizando nuestra encuesta. La página web está disponible del 29 de junio al 29 de julio de 2022.

**Online Open House at Survey ng SR 167**  
Pinag-aaralan ng WSDOT ang mga opsyon upang mapabuti ang paggalaw ng tao at bagay sa SR 167. Kasama ang mga komunidad sa gitna ng Renton at Tacoma sa lugar ng pag-aaral. Kung kayo ay nakatira, nagtatrabaho, o naglalakbay sa lugar na ito, bisitahin ang online open house upang matutunan ang proseso ng pagpapalano at ibahagi ang inyong mga ideya sa pamamagitan ng pagkuha ng survey. Ang online open house ay bukas mula Hulyo 29-Hulyo 29, 2022.

**Kulanka Furan ee Khadka Intarneeetka ah iyo Sahanka SR 167**  
Waxaad Gaadiidka ee Gobolka Washington (WSDOT) waxay darsayaa fursadaha lagu wanaajinayo dhacahaaga dadka iyo badeecooyinka ee istoomaal jidka SR 167. Goobta darsaadka waxaa ka mid ah bulshooyinka Renton ilaa Tacoma. Haddii aad ku nooshahay, ka shaqayso, ama aad ku safarto aaggan, booqo kulanka furan ee Khadka intarneeetka ah si aad wax uga ogaato habka wax loo qorsheeyayay aadna ula wadaagto fikradahaaga adigoo caadaniyo sahankeena. Kulanka furan ee khadka intarneeetka ayaa la heli karaa laga bilabo Aun 29-Lulyo 29, 2022.

**SR 167: Diễn đàn trực tuyến và khảo sát**  
WSDOT đang thực hiện nghiên cứu các phương án cải thiện di chuyển cho người và hàng hóa dọc theo SR 167. Khu vực nghiên cứu bao gồm các cộng đồng từ Renton đến Tacoma. Nếu Quý vị đang sinh sống, làm việc hoặc đi lại tại khu vực này, vui lòng truy cập diễn đàn trực tuyến để tìm hiểu về quy trình lập kế hoạch và chia sẻ ý kiến bằng cách tham gia khảo sát. Diễn đàn trực tuyến bắt đầu từ 29 tháng 6 đến 29 tháng 7, 2022.



[engage.wsdot.wa.gov/SR167masterplan](https://engage.wsdot.wa.gov/SR167masterplan) Participate by phone at 1-800-574-9450

**SR 167 Master Plan** SR 167 总体规划 • Генеральный строительный план внутриштатного шоссе 167 (SR 167) Plan Maestro de la SR 167 • Kế hoạch tổng thể SR 167

**Encuesta y página web interactiva de la SR 167**

Disponibile hasta el 29 de julio de 2022



# Come visit us at your local fair, festival or farmer's market!

## Summer events:

- Kent Cornucopia days: July 8 – 10
- Sumner Rhubarb days: July 9 – 10
- Eastside Tacoma Farmers Market: July 26
- SeaTac Music in the Park: July 26
- Renton Farmer's Market: August
- Auburn Farmer's Market: August
- Puyallup Farmer's Market: August
- Milton Days: August 20

**Many others under consideration...**

## Co-creation workshops

### Objectives:

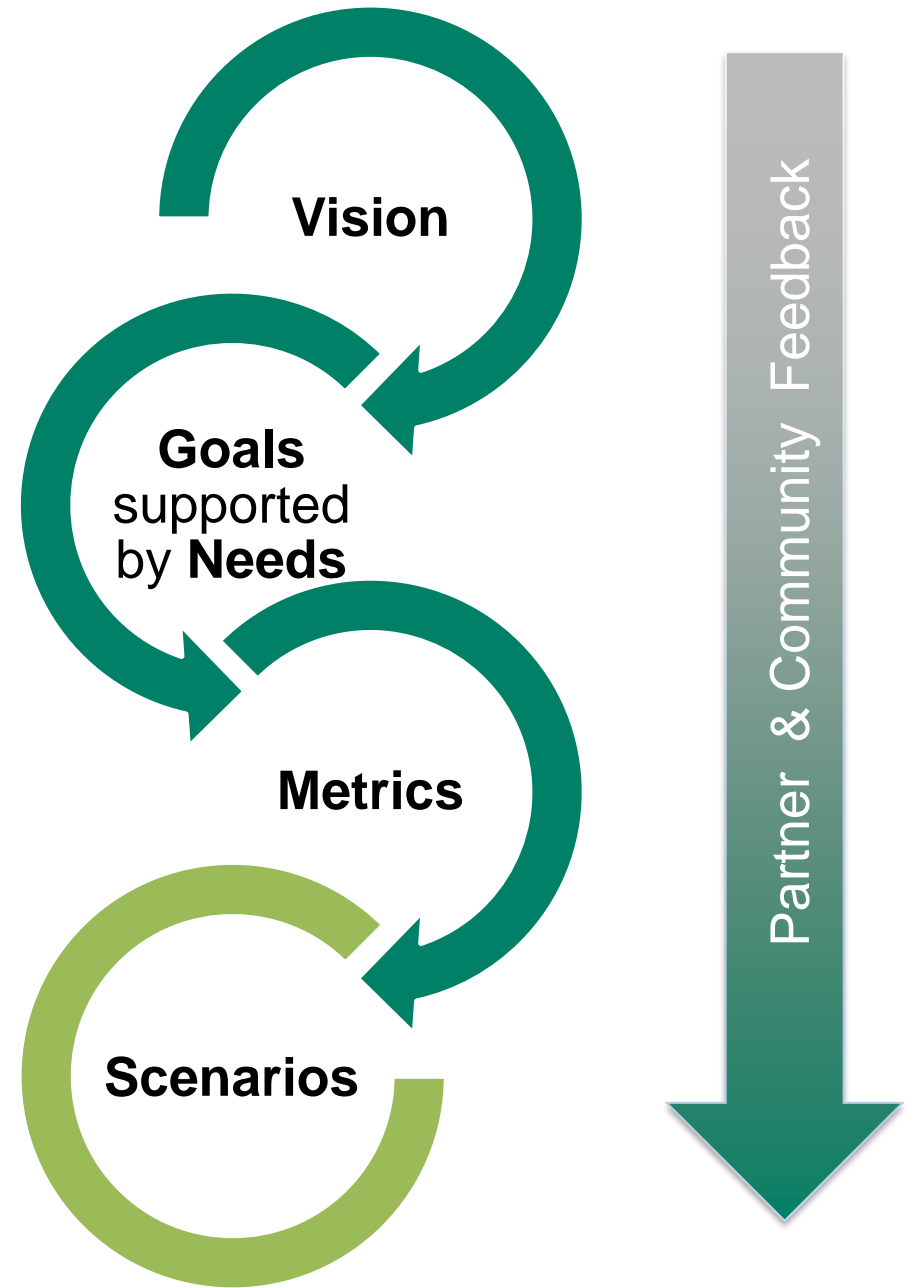
- Provide an opportunity for community members to tell us their story and for WSDOT to understand their transportation needs
- Provide an opportunity to work through potential ideas, solutions, and gather feedback

### Logistics:

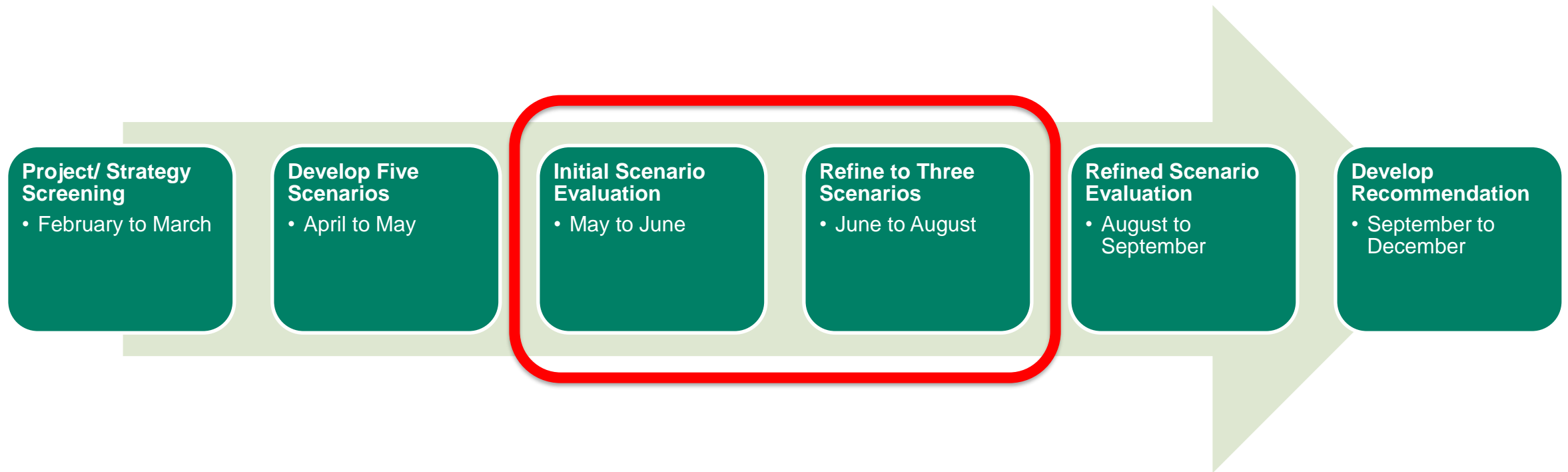
- We would like to partner with our CBO partners to gather 15-20 people per workshop.
- We will compensate workshop attendees for their time
- Two-hour workshop
- In-language engagement at the workshops
- Food and child activity center

# Scenario analysis

# Our process: vision to scenarios



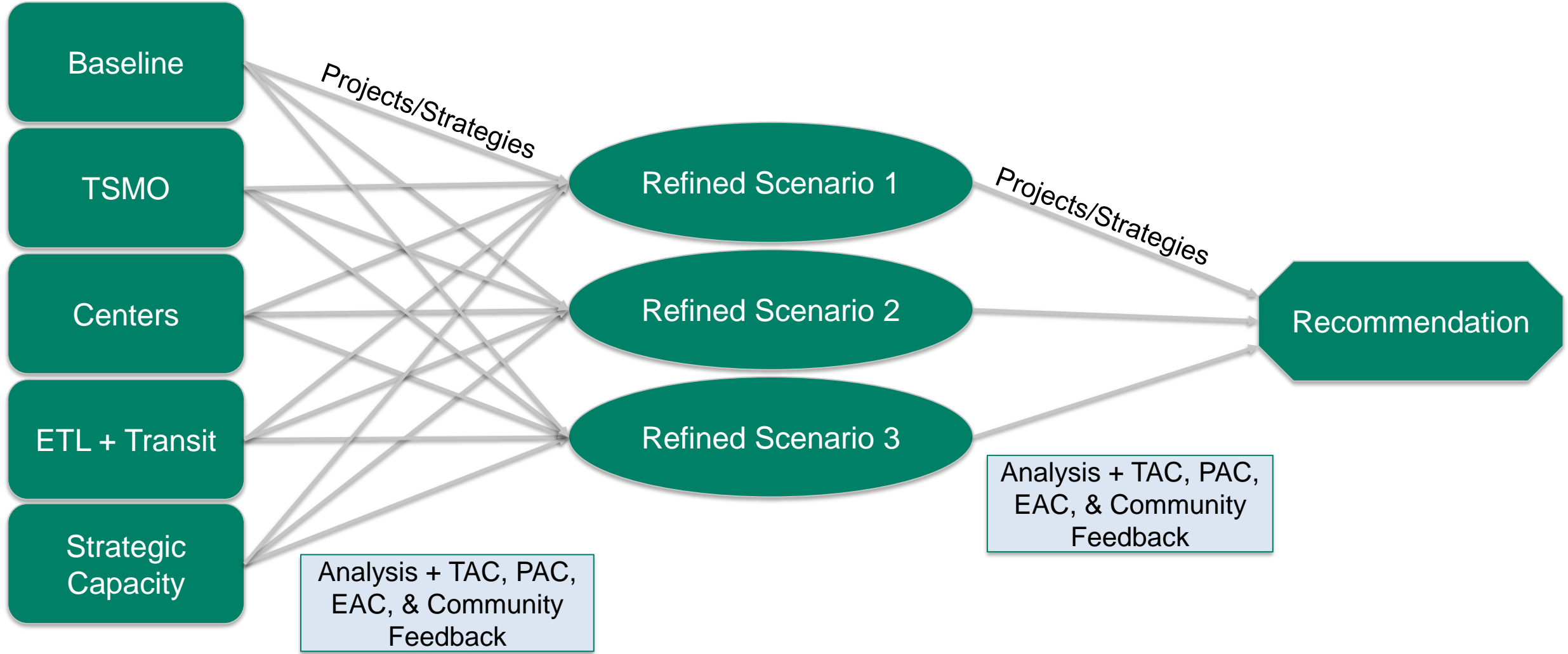
# Scenario Development Process



# Baseline + 4 scenarios

# 3 refined scenarios

# Recommendation

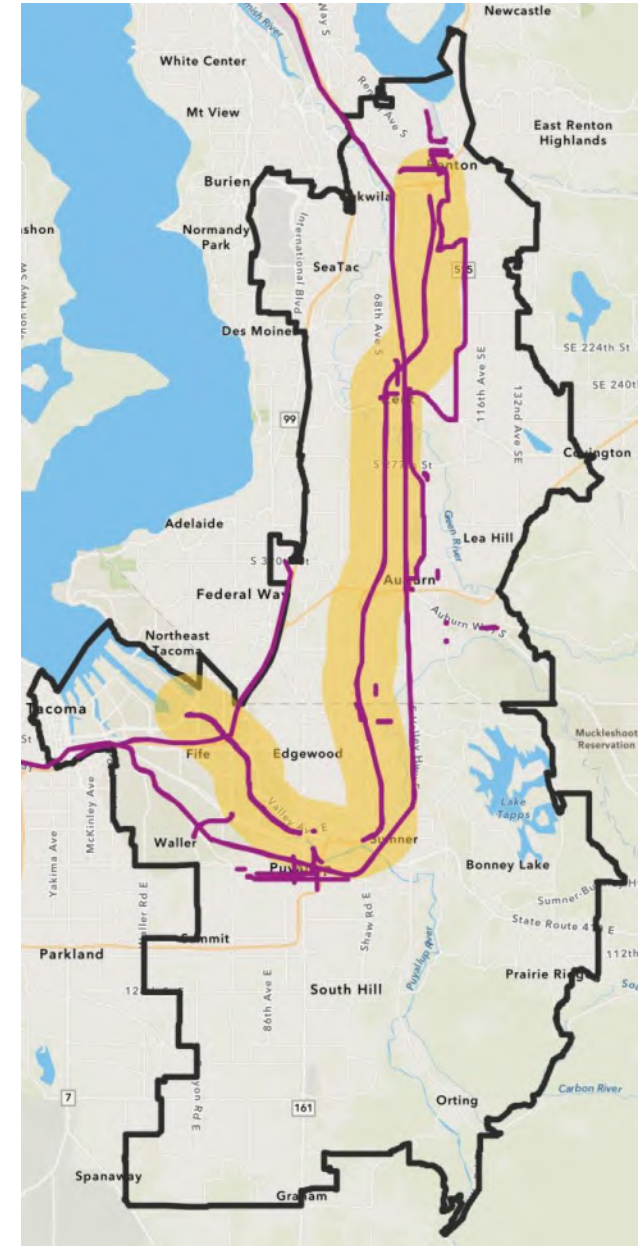


# Scenario Evaluation Results

- Scenarios: major project/strategy overview
- Overall tradeoffs
- What we learned
- How it will affect next steps
- Discussion

# Scenario Project/Strategy Summary: Baseline

- Funded projects within the study area that are likely to be implemented by 2050
- Distance-based tolling
- SR 167 extension
- Sound Transit 3, King County Metro RapidRide I Line
- Tacoma to Puyallup Regional Trail
- Local arterial and active mode improvements



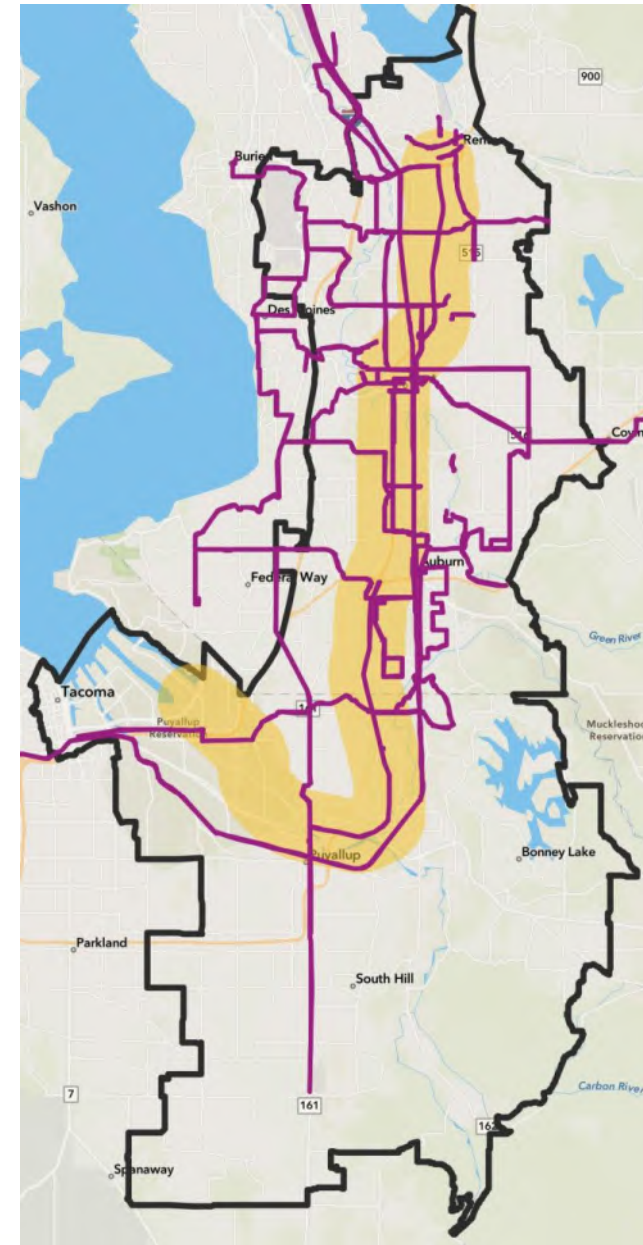




# Scenario Project/Strategy Summary: Centers

- Expanded transportation demand management strategies
- Substantial expansion of transit services\*; speed and reliability enhancements
- Substantial expansion of active transportation infrastructure in Centers
- Freight enhancements: truck only lane, arterial interchange improvements, expanded Express Toll Lane access for freight

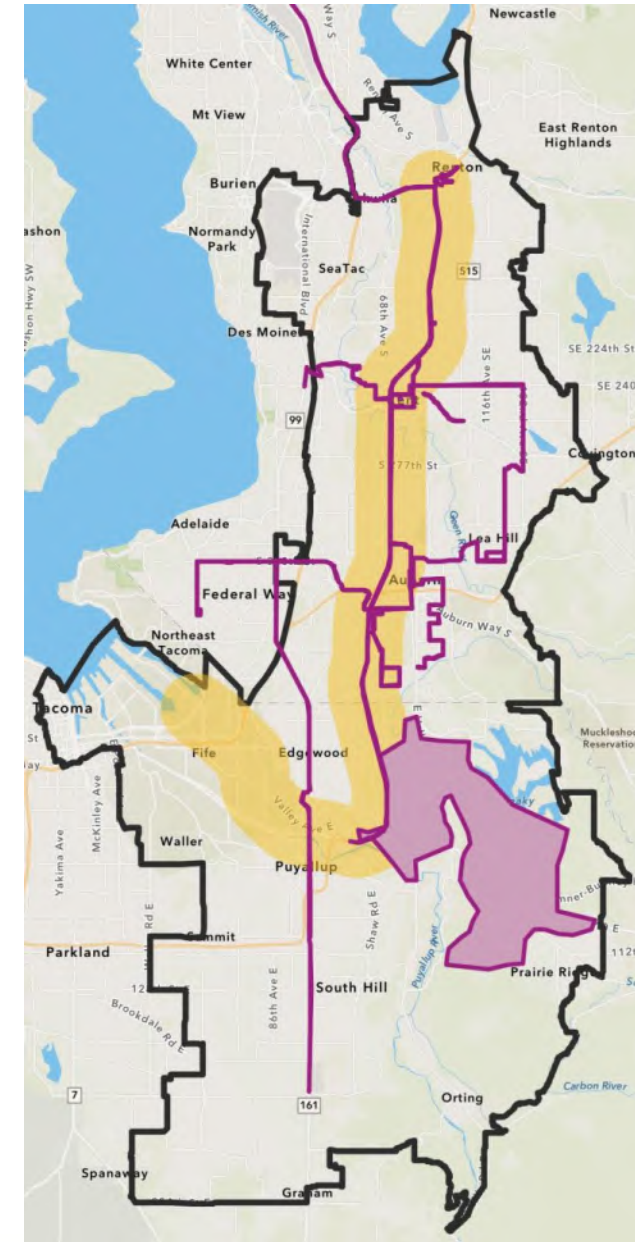
\*Some projects would require a vote of the people



# Scenario Project/Strategy Summary: Express Toll Lanes + Transit

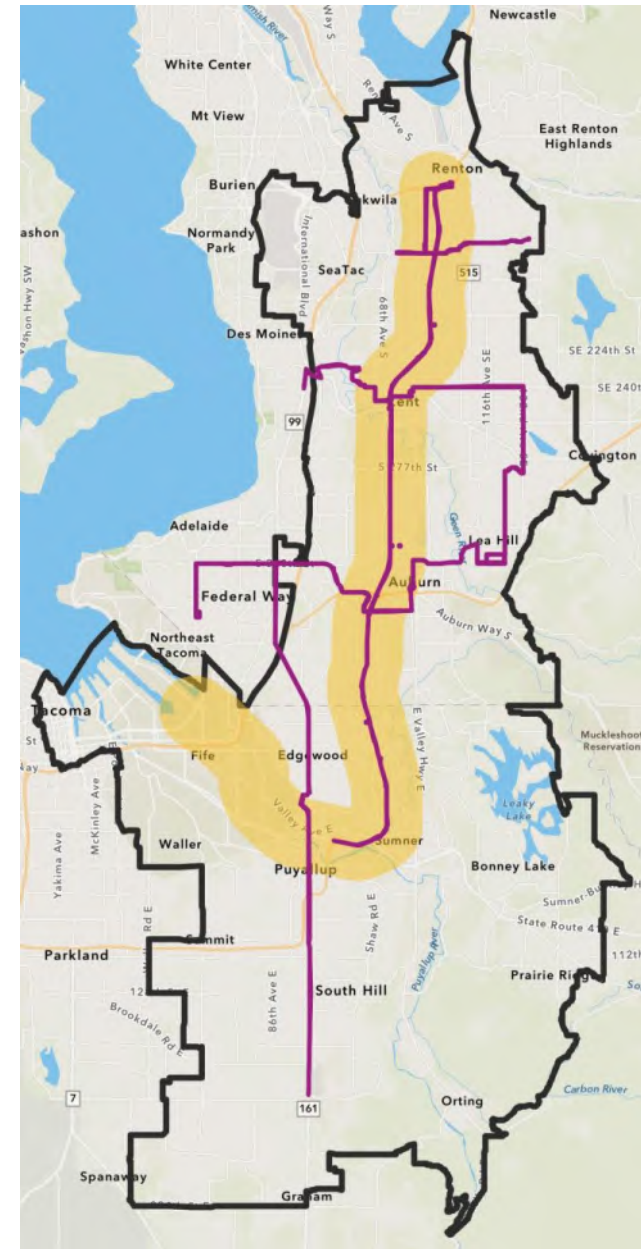
- Second express toll lane on SR 167
- Direct access ramps to transit hubs
- Bus rapid transit service on SR 167
- Key east-west transit routes and access to transit hubs\*

\*Some projects would require a vote of the people



# Scenario Project/Strategy Summary: Strategic Capacity

- Second general-purpose lane on SR 167
- Major interchange improvements at I-405, SR 18, and SR 410/512
- Arterial interchange improvements at numerous locations
- Key east-west transit routes



# Scenario Evaluation: Key Tradeoffs

Scenario	Pros	Cons
<b>Baseline</b>	All scenarios compared to Baseline; includes substantial population and employment growth	
<b>Transportation System Management &amp; Operations (TSMO)</b>	Greatest reduction in SR 167 congestion and lowest VMT per capita; strong increase in access to destinations via transit, walking, and biking	Largest shift of traffic to arterial streets; freight travel time potential equity implications of all-lane variable tolling
<b>Centers</b>	Greatest decrease in SOV mode share and increase in transit ridership; improved freight access in certain areas	Similar amount of traffic congestion on SR 167
<b>ETL+Transit</b>	Highest person throughput on SR 167 corridor, potential for lower ETL rates; least amount of traffic growth on arterial streets	Similar VMT per capita; environmental impacts of widening SR 167
<b>Strategic Capacity</b>	Greatest improvement to overall freight travel times and general-purpose travel times throughout the day; addresses major bottlenecks at major interchanges	Largest increase in VMT per capita (induced and latent demand); SR 167 still congested during peak periods; environmental impacts of widening SR 167

## What we learned

## How it affects our next steps

Adding general purpose lanes on SR 167 increases VMT per capita and creates negative environmental impacts. Managed capacity provides benefits to SR 167.

Evaluate versions of targeted, managed capacity tied to improvements in freight movement, person throughput, and bottlenecks that can provide the most cost-effective benefit and balance master plan goals

Marginal increase in transit service does not effectively improve access for equity priority areas

Evaluate a range of robust transit service expansions that addresses connectivity for equity priority areas to key destinations.

BRT on SR 167 performs well, but not all the major transit routes in the study area travel along SR 167

Evaluate substantial increases in transit service designed to refine the extent/scope of BRT service on SR 167 versus other core transit routes

The regional growth strategy is effective at reducing VMT per capita

Evaluate active mode and transit access to support increased land use intensity

Bottlenecks on SR 167 limit access, particularly for freight

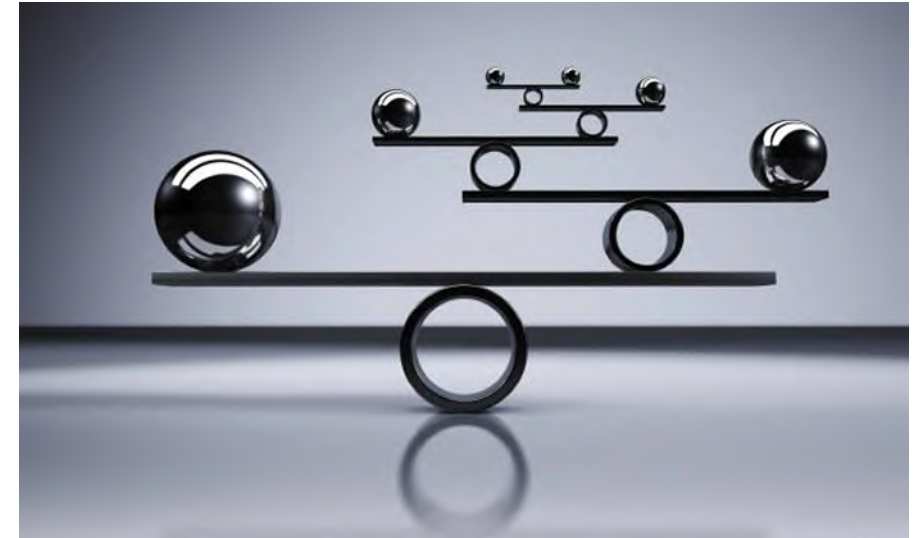
Evaluate a range of different bottleneck improvement projects across the three scenarios to optimize the benefit of bottleneck projects on SR 167 and complementary off-corridor investments

Truck only lanes provide substantial freight speed and reliability benefits

Evaluate different types of managed capacity on SR 167, including express toll lanes and truck only lanes, that can benefit freight movement while balancing other master plan goals

# Discussion

- Based on the results we have shared; we would like to hear your thoughts on what is important to evaluate with the three refined scenarios.
- What questions remain for you?
- Is there information or context you feel is important to share with the SR 167 team?

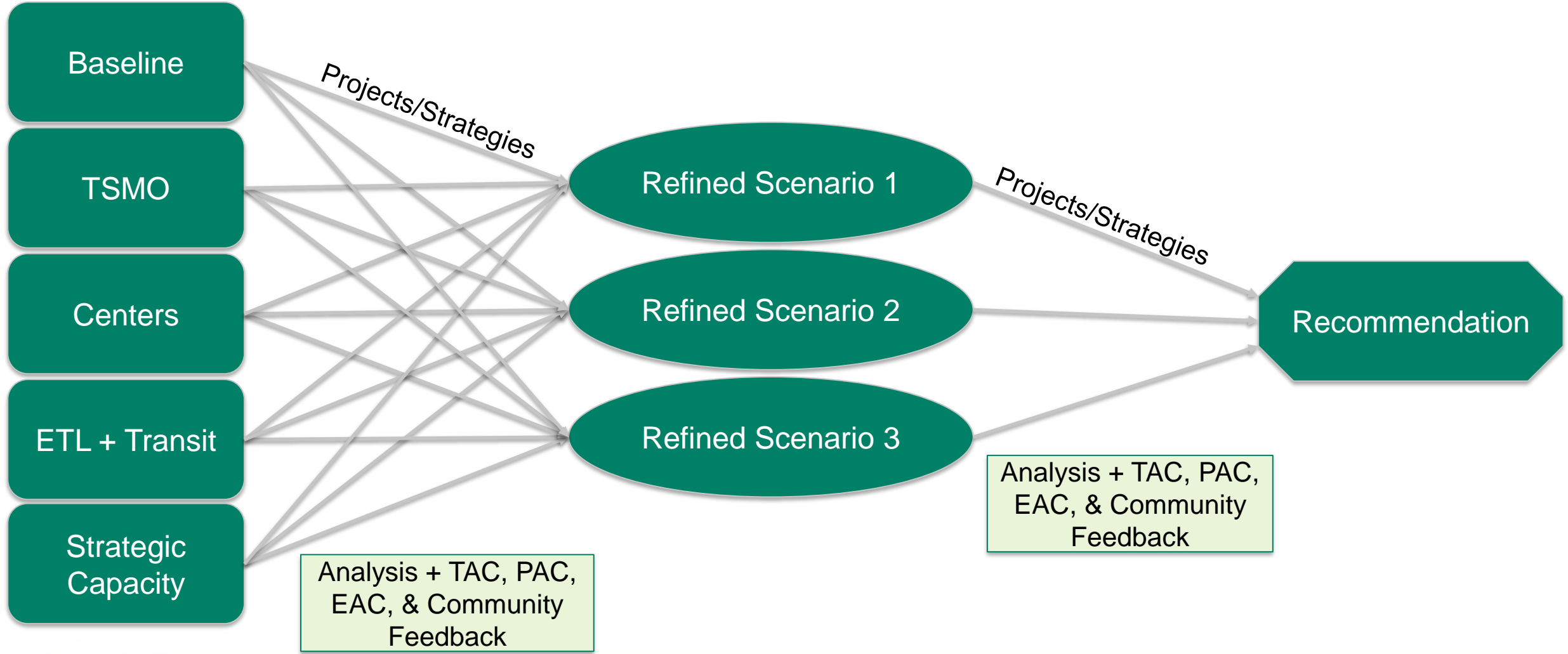


# Scenario Development

# Baseline + 4 scenarios

# 3 refined scenarios

# Recommendation





# Moving from 5 to 3 Scenarios

- Work with partners to identify projects and strategies that best advance the Master Plan goals
- Master Plan team will develop a new set of themes for the refined scenarios based on analysis results, TAC, PAC, EAC, community co-creation workshops, and outreach feedback
- Master Plan team will conduct more detailed technical evaluation of the combination of the projects and strategies in each refined scenario:
  - Equity priority area evaluations
  - Evaluate accessibility for study area as a whole
  - Traffic operations analysis on SR 167 mainline
  - GIS analysis of major modal gaps
  - Environmental analysis
  - Cost estimates and cost effectiveness evaluation
- Evaluation focused on larger-scale projects and strategies

# Next steps

# Partner meeting schedule

## Meeting 1 November

- Review and discuss committee roles and responsibilities
- Draft purpose and need
- Study area approach
- Draft evaluation criteria

## Meeting 2 January/February

- Final purpose and need
- Final evaluation framework
- Initial project list

## Meeting 3 March

- Review existing conditions
- Define scenario development
- Community engagement update

## Meeting 4 June

- Review and discuss scenario analysis
- Community engagement update

## Meeting 5 October/November

- Present refined scenarios
- Community engagement update

## Meeting 6 January

- Provide recommended solution
- Community engagement update

## Meeting 7 March

- Review plan highlights
- Executive Summary
- Next steps

# Next Steps

- **Engagement**
  - Online open house launched June 29!
  - Fairs, Festivals, and Farmer's Markets
  - Equity Advisory Committee meeting – September 23
- **Technical Work**
  - Begin preparing models for analysis of 3 refined alternatives
- **Request for Partner Feedback:**
  - **3 Refined Scenarios:** Request for feedback anticipated in September
- **TAC Meeting #5: October**
- **PAC Meeting #5: November**

## More information:

**Robin Mayhew, AICP**  
**Management of Mobility Director**  
**(206) 464-1264**  
[MayhewR@wsdot.wa.gov](mailto:MayhewR@wsdot.wa.gov)

**April Delchamps, AICP**  
**Planning Manager**  
**(206) 305-9479**  
[DelchaA@wsdot.wa.gov](mailto:DelchaA@wsdot.wa.gov)

**Chris Breiland, PE**  
**SR 167 Project Manager**  
**(206) 576-4217**  
[BreilaC@consultant.wsdot.wa.gov](mailto:BreilaC@consultant.wsdot.wa.gov)

**Loreana Marciante**  
**SR 167 Equity Analysis Lead**  
**(206) 450-6801**  
[MarciaL@consultant.wsdot.wa.gov](mailto:MarciaL@consultant.wsdot.wa.gov)

**Henry Yates**  
**Equity Advisory Committee Facilitator**  
[Henry@yatescg.com](mailto:Henry@yatescg.com)

**Amy Danberg**  
**SR 167 Master Plan Partner and Community Engagement**  
**(206) 962-9635**  
[DanberA@consultant.wsdot.wa.gov](mailto:DanberA@consultant.wsdot.wa.gov)