

POLE DATA - PED POLE - SLIP / FIXED												
MMC #	QTY	FIXED	SLIP	POLE TYPE	POLE TUBE				POLE BASE	ANCHOR BOLT		
					THICK (IN) "A"	BASE DIA (IN) "B"	TOP DIA (IN) "C"	LENGTH (FT) "D"		BASE PLATE	DIA	LENGTH "E"
WA-PED-SB-PS-78				PS	11 GA	6.5	5.43	7'-8"	3/4"	3/4" DIA - FULLY THREADED	30"	1/4" x 2" x 15"
WA-PED-SB-I-98			I	5.15			9'-8"					
WA-PED-SB-RM-98			RAMP METER	5.15			9'-8"					
WA-PED-SB-FB-138			FLASHING BEACON	4.59			13'-8"					

POLE DATA - PED POLE CURB - SLIP / FIXED												
MMC #	QTY	FIXED	SLIP	POLE TYPE	POLE TUBE				POLE BASE	ANCHOR BOLT		
					THICK (IN) "A"	BASE DIA (IN) "B"	TOP DIA (IN) "C"	LENGTH (FT) "D"		BASE PLATE	DIA	LENGTH "E"
WA-PED-SB-PS-78-C				PS	11 GA	6.5	5.43	7'-8"	3/4"	3/4" DIA - FULLY THREADED	36"	1/4" x 2" x 15"
WA-PED-SB-I-98-C			I	5.15			9'-8"					
WA-PED-SB-RM-98-C			RAMP METER	5.15			9'-8"					
WA-PED-SB-FB-138-C			FLASHING BEACON	4.59			13'-8"					

**MATERIAL SPECIFICATIONS**

POST: ASTM A572 GR55  
 BASE PLATE: ASTM A709 GR 50  
 MAST ARM: N/A  
 MOUNTING PLATE: N/A  
 HARDWARE FINISH: ASTM F2329  
 CONNECTION BOLTS: ASTM A449 OR F1554 GR 55 OR 105  
 CONNECTION NUTS:  
 CONNECTION WASHERS:  
 ANCHOR BOLTS: ASTM F1554 GR55  
 ANCHOR BOLT NUTS: ASTM A563 GR DH  
 ANCHOR BOLT WASHER: ASTM F436  
 KEEPER PLATE/COATING: ASTM A653 GR 33/G90

**DESIGN CRITERIA**

2015 AASHTO STANDARD SPECIFICATIONS FOR STRUCTURAL SUPPORTS ON HIGHWAY SIGNS, LUMINAIRES & TRAFFIC SIGNALS INCLUDING LATEST INTERIMS.

WINDS: 115 MPH WITH A MEAN RECURRENCE INTERVAL OF 1700 YEARS  
 VORTEX SHED: N/A  
 FATIGUE CAT: N/A  
 NATURAL WIND GUST: N/A  
 LUMINAIRE: N/A  
 LUMINAIRE WEIGHT: N/A  
 SIGN: N/A  
 SIGN WEIGHT: N/A

**WELD SPECIFICATION**

THE POST AND MAST ARM TO BE ROUND TAPERED TUBE FABRICATION WITH ONE SUBMERGED ARC LONGITUDINAL SEAM WELD WITH 100% PENETRATION 6" FROM BASE PLATE. FLANGE AND BUTT WELDED SHAFTS. EXCEPT FOR TUBES LESS THAN 5 IN DIAMETERS. FOR FEMALE SECTION OF SLIP JOINTED TUBES 10" AND GREATER: 1.5 X FEMALE SECTION INSIDE DIAMETER + 6 INCHES. FOR FEMALE SECTION OF SLIP JOINTED TUBES LESS THAN 10" FEMALE SECTION NOMINAL DIAMETER AND 60% FOR REMAINDER. GAS METAL ARC WELDING PROCESS WITH 60% PENETRATION MAY BE USED FOR REMAINDER OF WELDED FABRICATION.

WELD TESTING: 100% OF ALL WELDS VISUAL TESTED (VT) (MT), 100% OF ALL COMPLETE JOINT PENETRATION (CJP) WELDS ULTRASONIC TESTED (UT) BASED ON THE THINNEST MATING MATERIAL: (PER AASHTO 2013 5.15.5-WELD INSP) THICKNESS < 6MM (0.25 IN) MT ≥ 6MM (0.25 IN) UT

WELDING INSPECTION OF STRUCTURE SHALL BE IN ACCORDANCE WITH THE REQUIREMENTS OF WASHINGTON STATE DEPARTMENT OF TRANSPORTATIONS STANDARD SPECIFICATION SECTION 6-03.3(25) AND 2015 AASHTO WELD INSPECTION SECTION 14.4.4.8

**STRUCTURE FINISH SPECIFICATION**

GALV. OR PRIME COAT: HOT DIPPED GALV. PER ASTM A123  
 FINISH COAT:  
 COLOR:  
 FEDERAL OR RAL SPEC.:  
 WEIGHT W/GALV.:  
 WEIGHT W/GALV. & PAINT:  
 SURFACE AREA:  
 GAL. OF PAINT:

ITEM NO.	DESCRIPTION	QTY PER	ASSY	FINISH
1	KEEPER PLATE TRI	1		X
2	TEMPLATE 2X1/4X15	6		X
3	TEMPLATE 2X1/4X15	6		X
4	WLDMT POLE PED "A"x"B"x"C"x"D"	1		X
5	WLDMT BASE SLIP	1		X
6	I.D. TAG - WA	1	X	
7	COVER HH M16C 4 1/4X6 3/4 2 BOLT	1		X
8	BOLT HVYHXHD 3-4-10X 5 A325GV	3		
9	NUT HVY HX 3-4-10NC G5 GV	21		
10	NUTHX1-4-20SS	3		
11	RIVET POP 3/16X1/2X3/8 HD SS	2	X	
12	SCRW HX SK BT HD 1-4-20NC X 1 SS	2		
13	WASHER FLAT 1/4 SS 5/8 OD ASME B18.22.1 SS	2		
14	WASHER FLAT 3/4 ASTM F436 GV	9		
15	ANCHOR BOLT 3/4X30 LG (FULLY THREADED)	3		
16	GASKET HH M16	1	X	

SALES ORDER NO.: 74514 QTY: - STATE: WA SHEET 1 OF 2

DESCRIPTION: SUB POLE PED RD - SLIP BASE

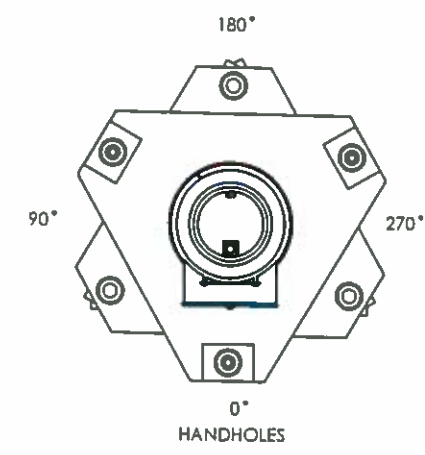
EST. WEIGHT: DRAWING NO: 74514-WA-PED-SB

PROJECT NAME: STATE OF WASHINGTON PED POLES

PROJECT LOCATION: WA

DWN BY: REBEKAH DATE: 02-16-2017

CHK BY: DATE:



TOP VIEW ORIENTATION

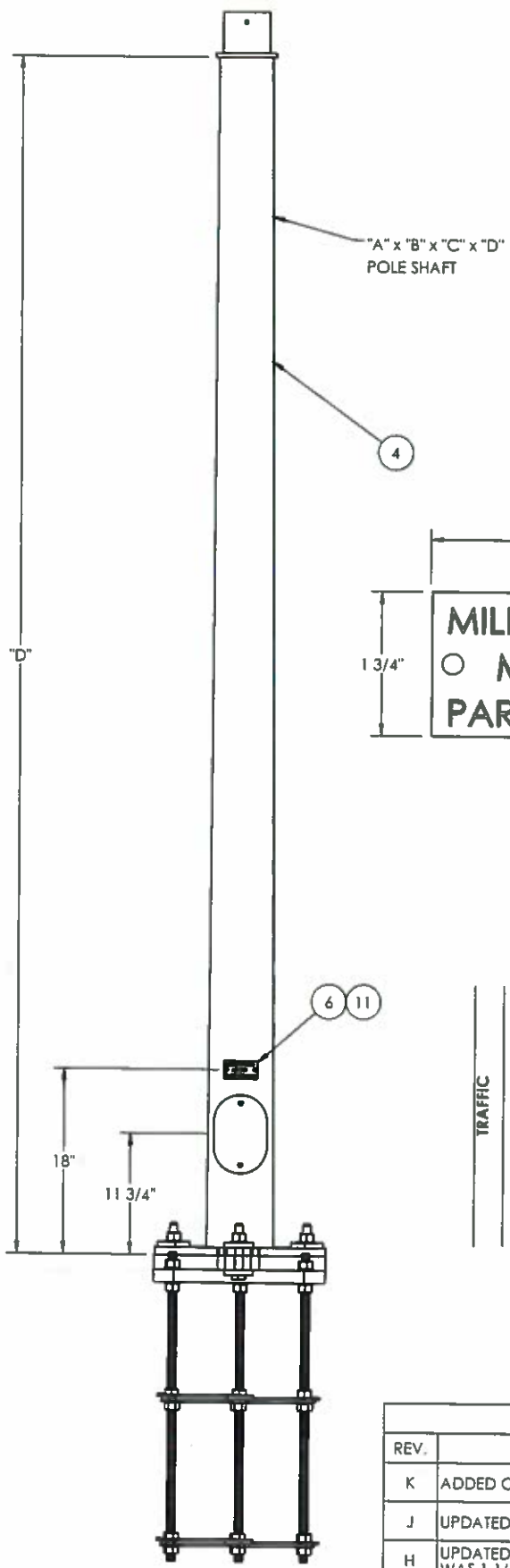
NOTE: 11 GA SHAFT MATERIAL = .1196" THK

NOTE: FOR NOTE AT WELD SYMBOL TAIL. SEE WELDING PROCEDURE SPECIFICATION

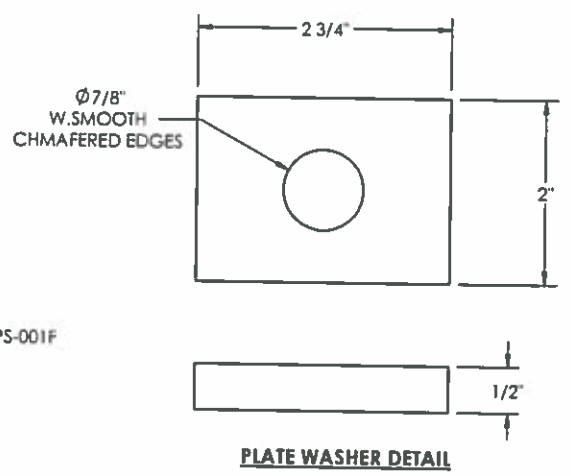
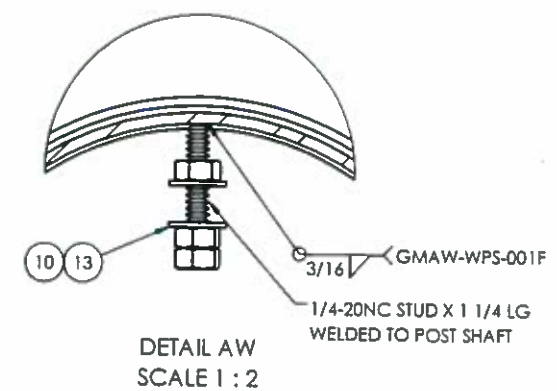
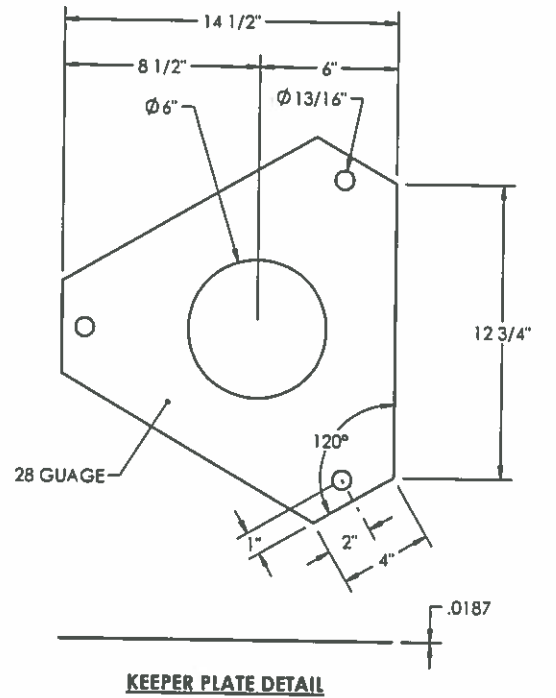
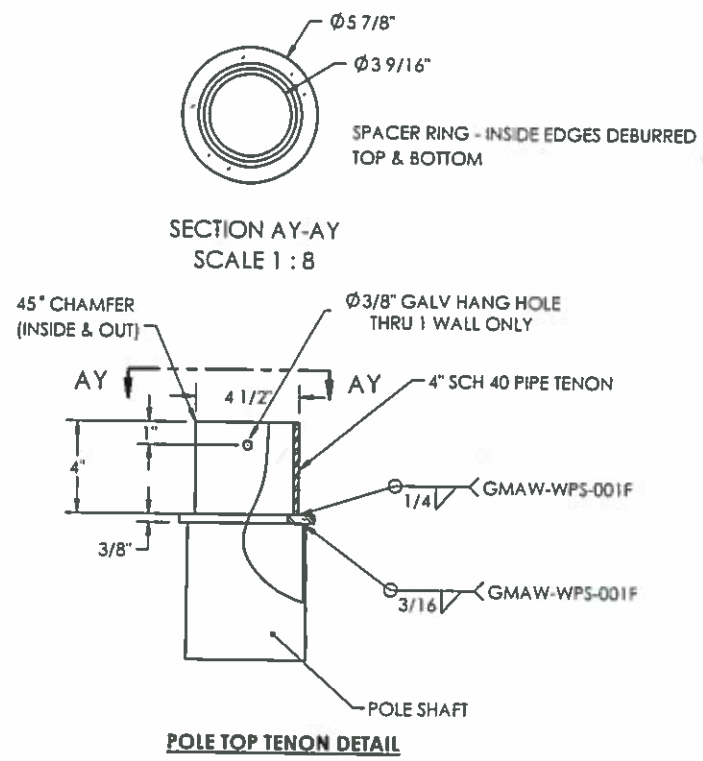
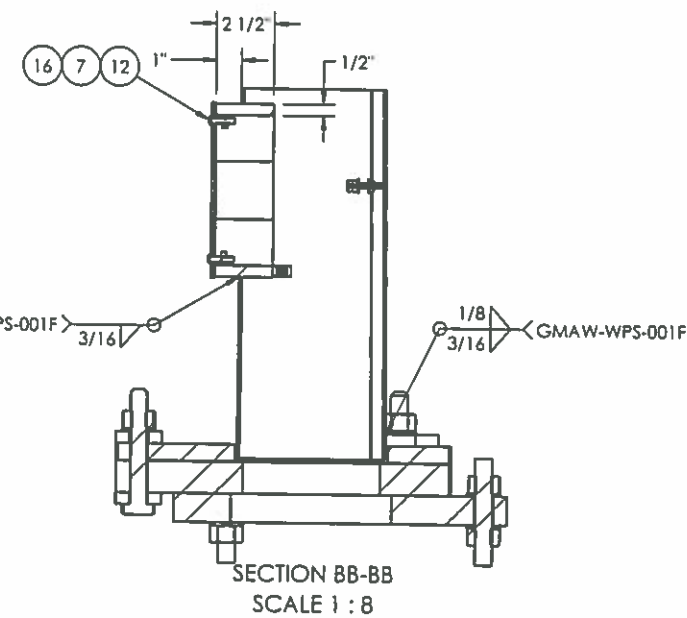
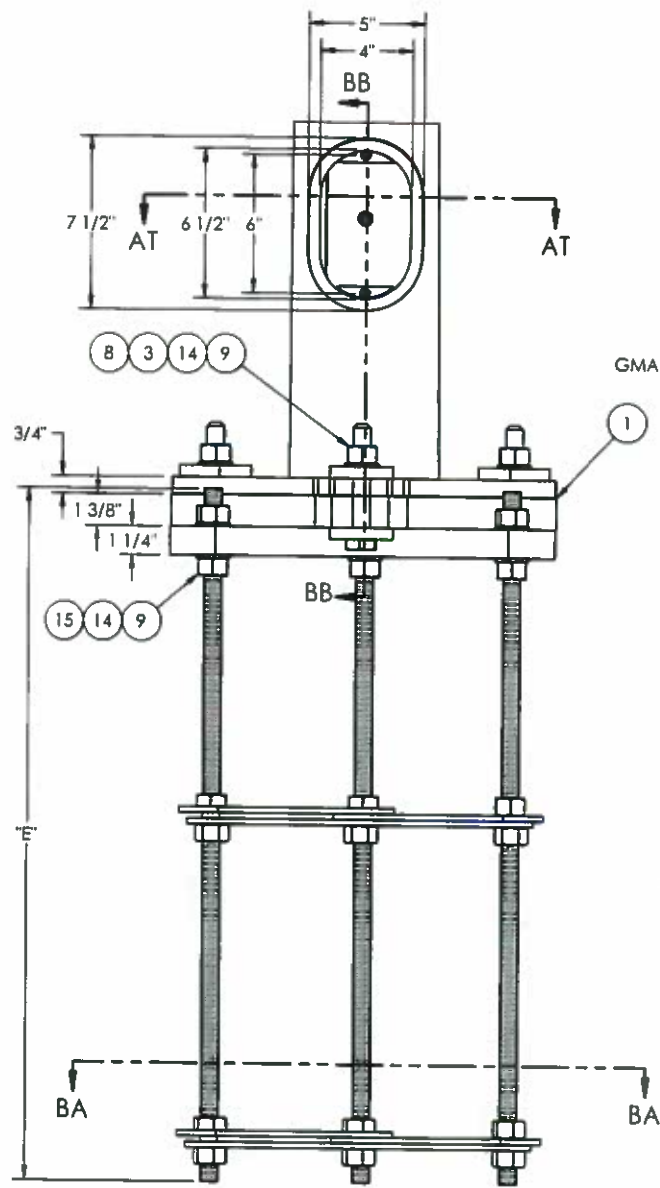
**APPROVED**  
 Manufacturer's Pole Plan  
 Approved For Listing As A  
 Pre-Approved Drawing  
 WSDOT Bridge & Structures Office  
 By GB Date 3-30-2021



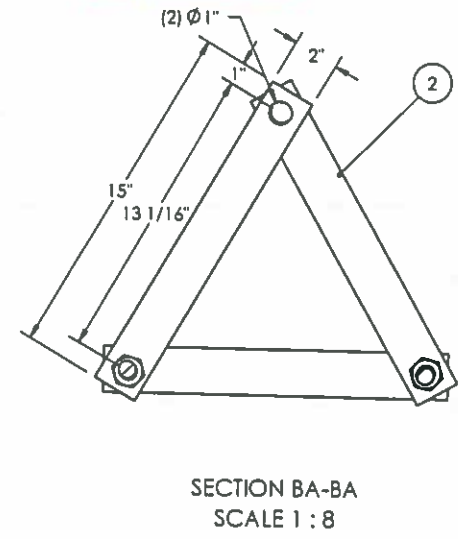
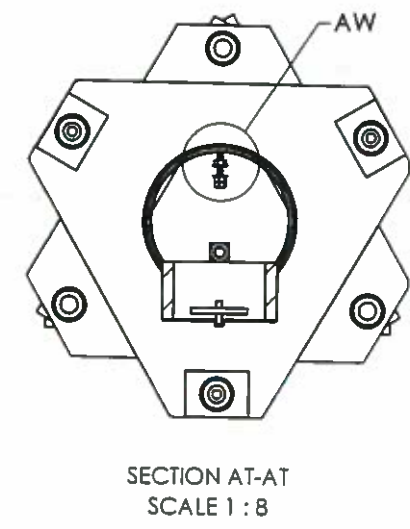
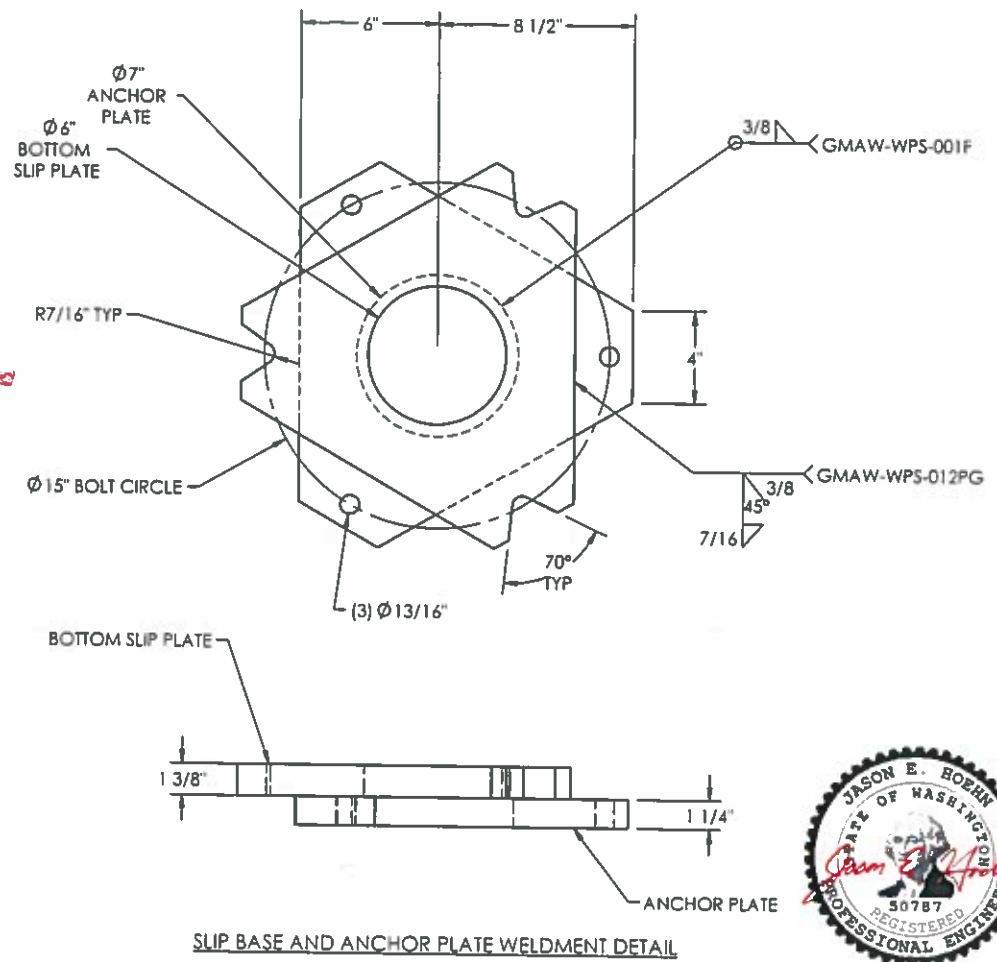
3-30-21 (EXPIRES 12-18-21)



REVISIONS			
REV.	DESCRIPTION	DATE	DRFT
K	ADDED CURB BASE OPTION	3/22/21	TK
J	UPDATED WELD NOT UPDATE PER COMMENTS	6/12/2020	RK
H	UPDATED NOTES PER COMMENTS BASE PLATE WAS 1 1/4"; UPDATED WPS TO MMC STANDARDS	5/12/2020	RK
G	ADDED 3/8" DIA GALV HANG HOLE IN TENON	1/22/2020	RK



**APPROVED**  
 Manufacturer's Pole Plan  
 Approved For Listing As A  
 Pre-Approved Drawing  
 WSDOT Bridge & Structures Office  
 By GB Date 3-30-2021



3-30-21 (EXPIRES 12-18-21)

<b>MILLERBERND</b>		622 6TH ST. SO. WINSTED, MN 55395	
THIS DOCUMENT CONTAINS CONFIDENTIAL INFORMATION AND IS THE PROPERTY OF MILLERBERND MFG AND MAY NOT BE COPIED, REPRODUCED OR DISCLOSED IN ANY MANNER WITHOUT THE EXPRESS WRITTEN CONSENT FROM MILLERBERND MFG			
SALES ORDER NO.:	QTY:	STATE:	SHEET
74514	-	WA	2 OF 2
DESCRIPTION: SUB POLE PED RD - SLIP BASE			
EST. WEIGHT:		DRAWING NO: 74514-WA-PED-SB	
PROJECT NAME: STATE OF WASHINGTON PED POLES			
PROJECT LOCATION: WA			
DWN BY: REBEKAH		DATE: 02-16-2017	
CHK BY:		DATE:	