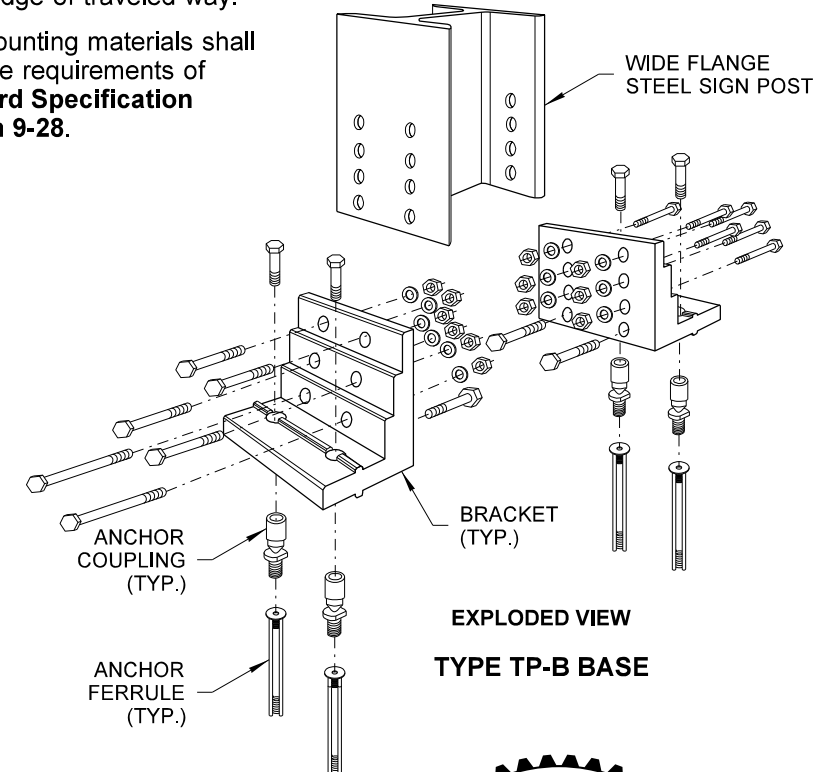
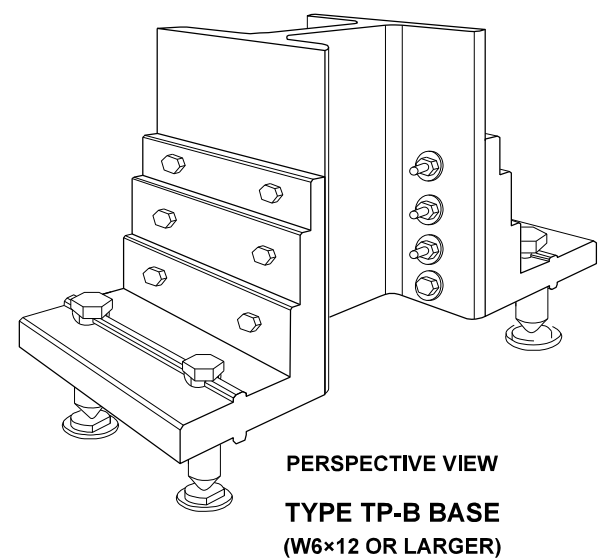
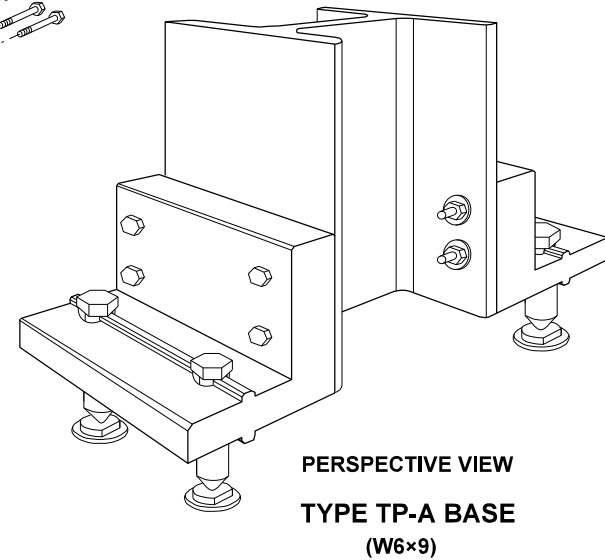
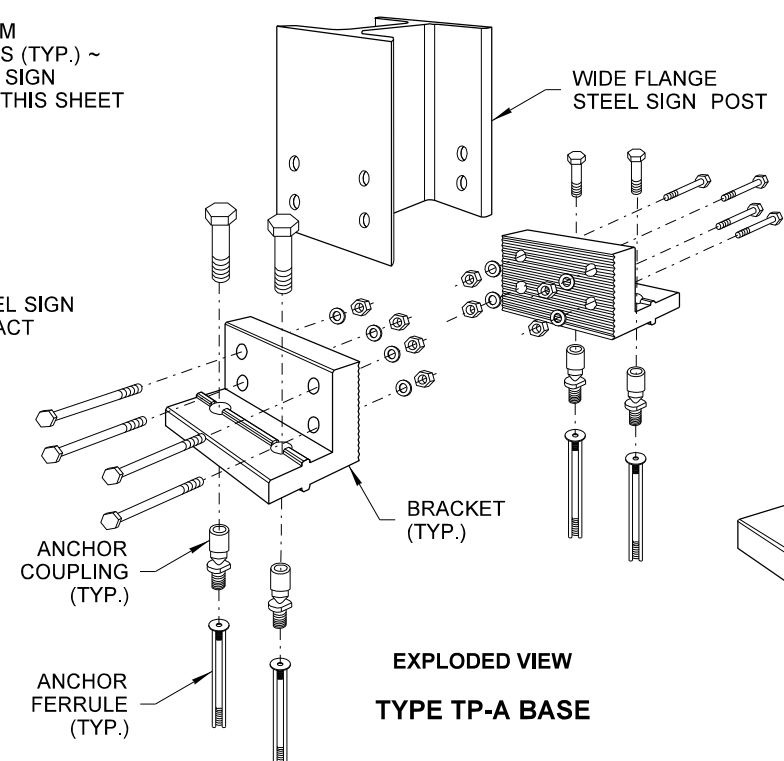
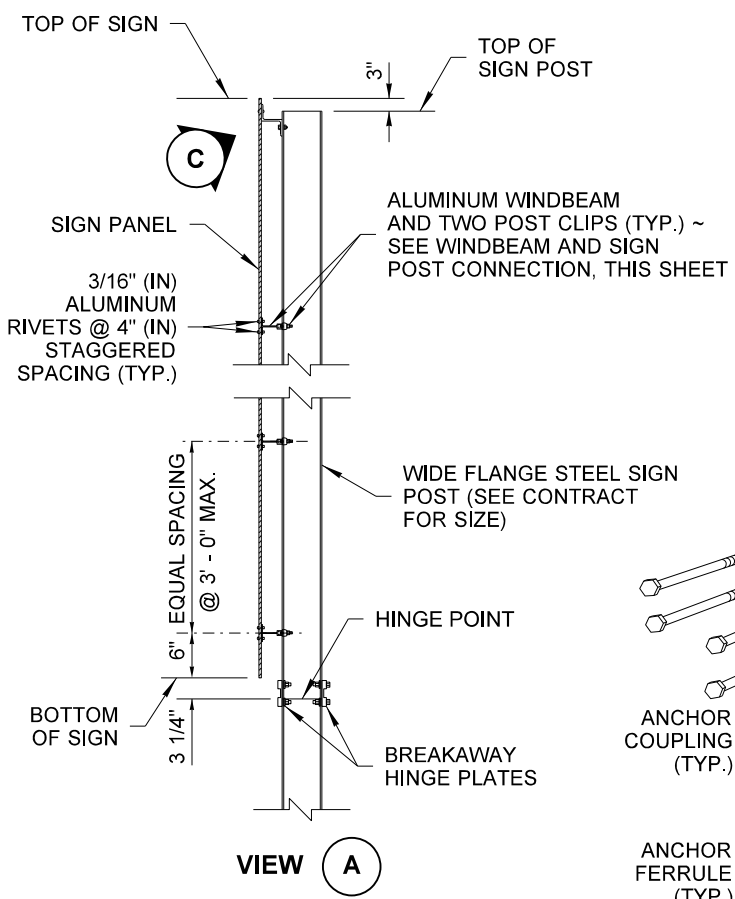
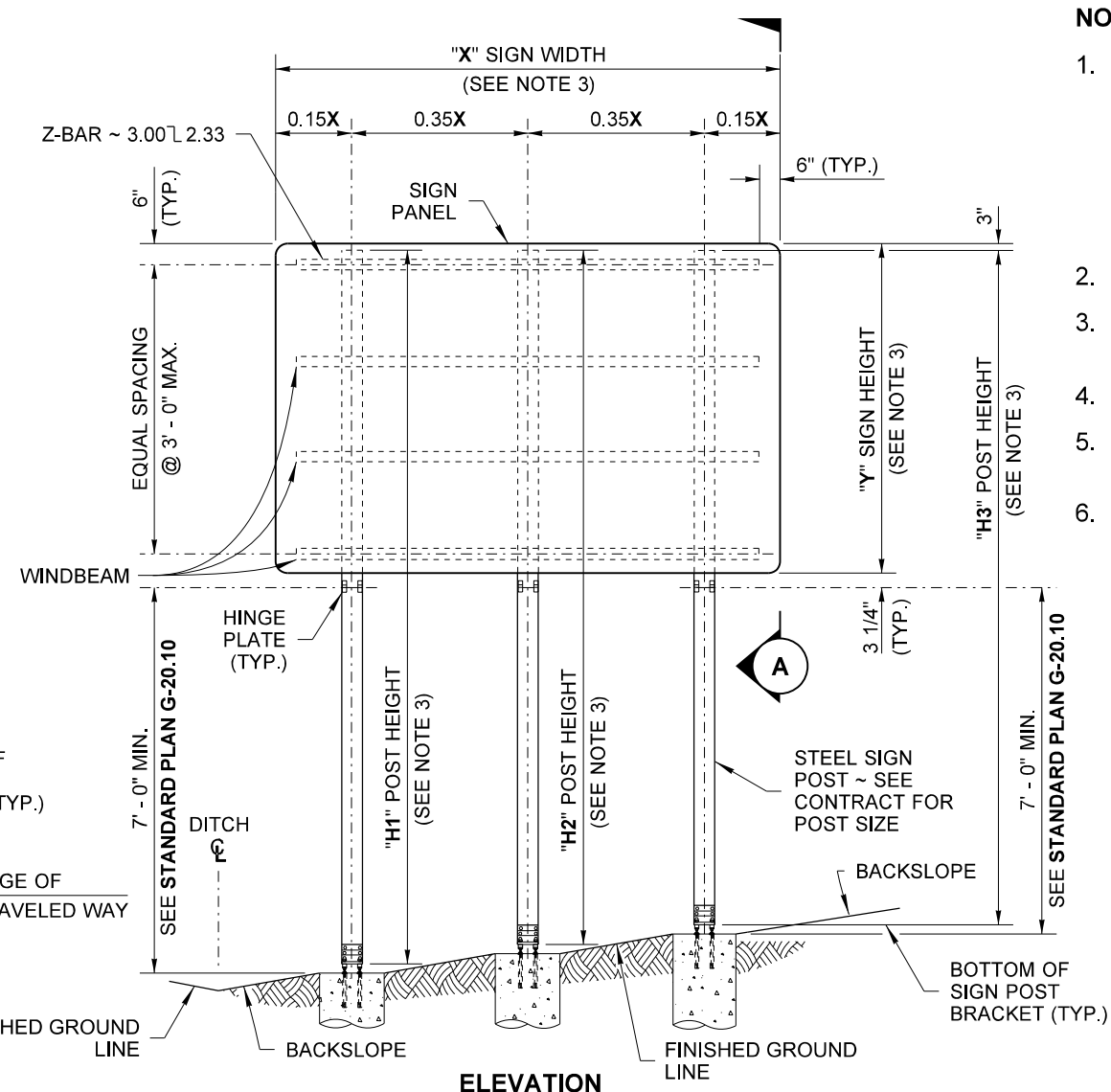
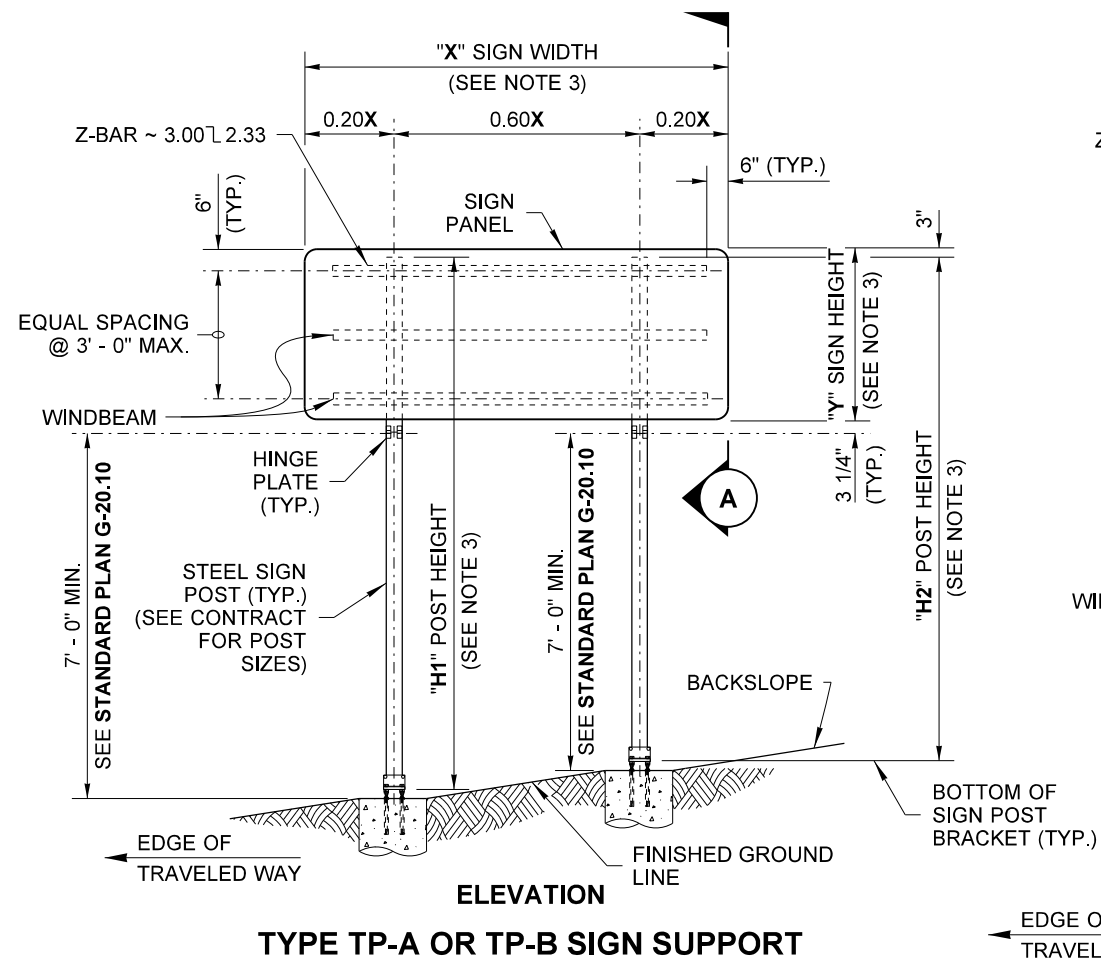
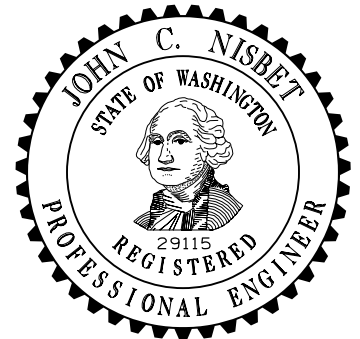


DRAWN BY: FERN LIDDELL



**NOTES**

1. Dimensions for the parts used to assemble the base connections are intentionally not shown. Base connections are patented, manufactured products that are in compliance with NCHRP 350 crash test criteria. The base connection details are shown on this plan only to illustrate how the parts are assembled. Use only base connection manufacturer supplied hardware that meets the requirements of **Standard Specification Section 9-06**.
2. For Steel Sign Support Foundations, see **Standard Plan G-25.10**.
3. For "X", "Y", "H1", "H2", and "H3", refer to the Sign Specification Sheet in the Contract.
4. Maximum of 34 lbs/ft in a 7' (ft) wheel path.
5. On fill slopes, the maximum sign height is 9' (ft) for posts closest to the edge of traveled way.
6. Sign mounting materials shall meet the requirements of **Standard Specification Section 9-28**.



**STEEL SIGN SUPPORT  
 TYPES TP-A AND TP-B  
 INSTALLATION DETAILS  
 STANDARD PLAN G-24.60-05**

SHEET 1 OF 2 SHEETS  
 APPROVED FOR PUBLICATION

