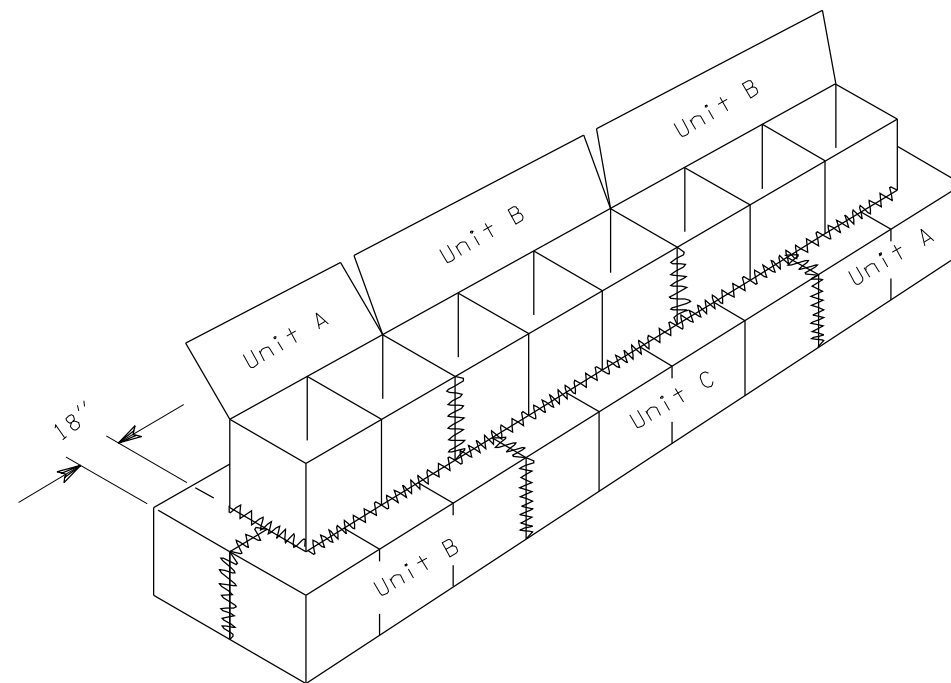
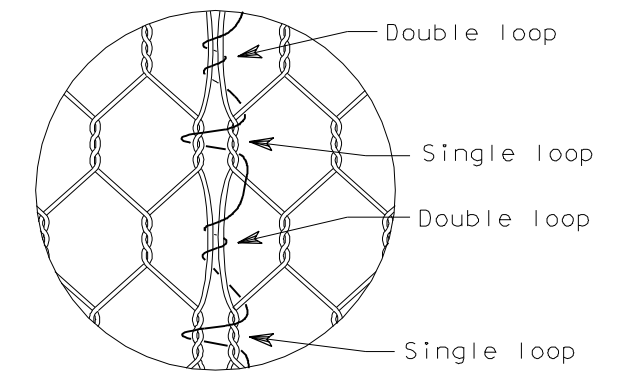


Unit A - 2 cell gabion = 6'  
 Unit B - 3 cell gabion = 9'  
 Unit C - 4 cell gabion = 12'

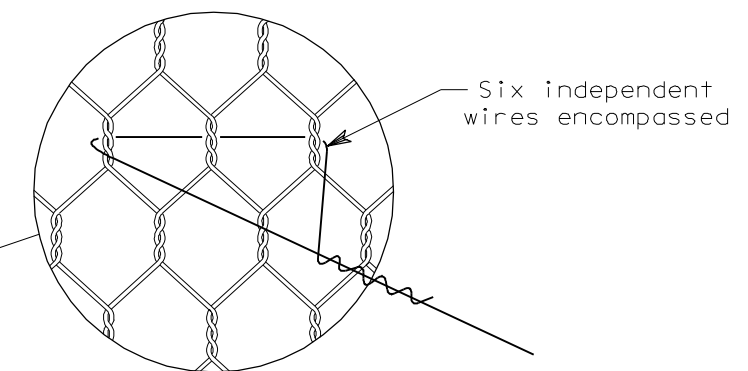
TYPICAL GABION



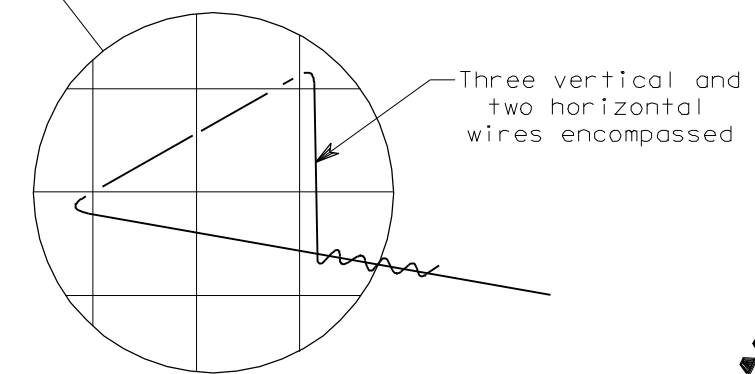
FASTENING ADJACENT BASKETS



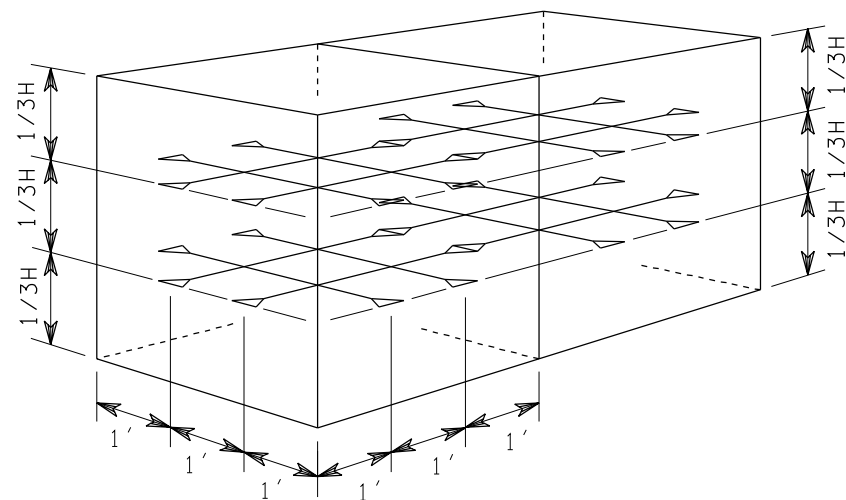
LACING DETAIL



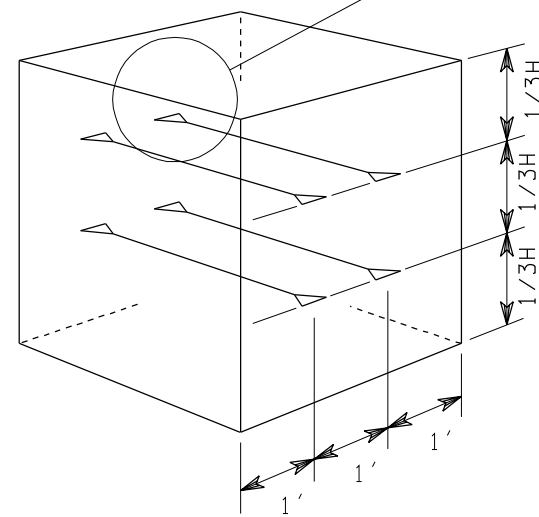
TWISTED FABRIC



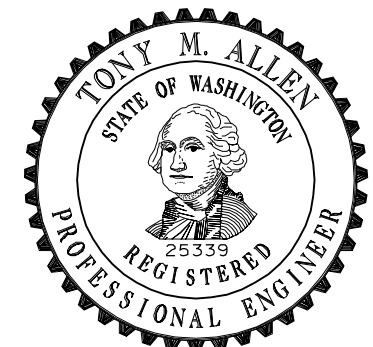
WELDED FABRIC



CROSS-CONNECTING WIRE PLACEMENT, END CELLS



CROSS CONNECTING WIRE PLACEMENT, INTERIOR CELLS OF FRONT GABIONS



EXPIRES JULY 1, 1999

NOTE: THIS PLAN IS NOT A LEGAL ENGINEERING DOCUMENT BUT AN ELECTRONIC DUPLICATE. THE ORIGINAL, SIGNED BY THE ENGINEER AND APPROVED FOR PUBLICATION, IS KEPT ON FILE AT THE WASHINGTON STATE DEPARTMENT OF TRANSPORTATION. A COPY MAY BE OBTAINED UPON REQUEST.

GABIONS  
 STANDARD PLAN D-6

APPROVED FOR PUBLICATION  
**Clifford E. Mansfield** 6/19/98  
 DEPUTY STATE DESIGN ENGINEER DATE  
 WASHINGTON STATE DEPARTMENT OF TRANSPORTATION  
 OLYMPIA, WASHINGTON