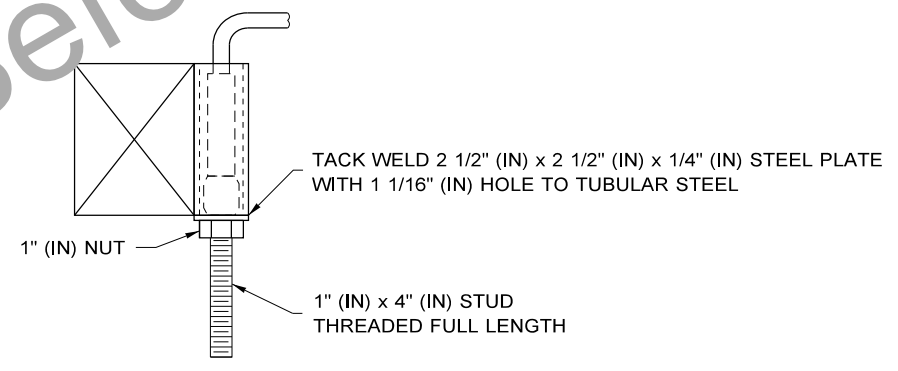
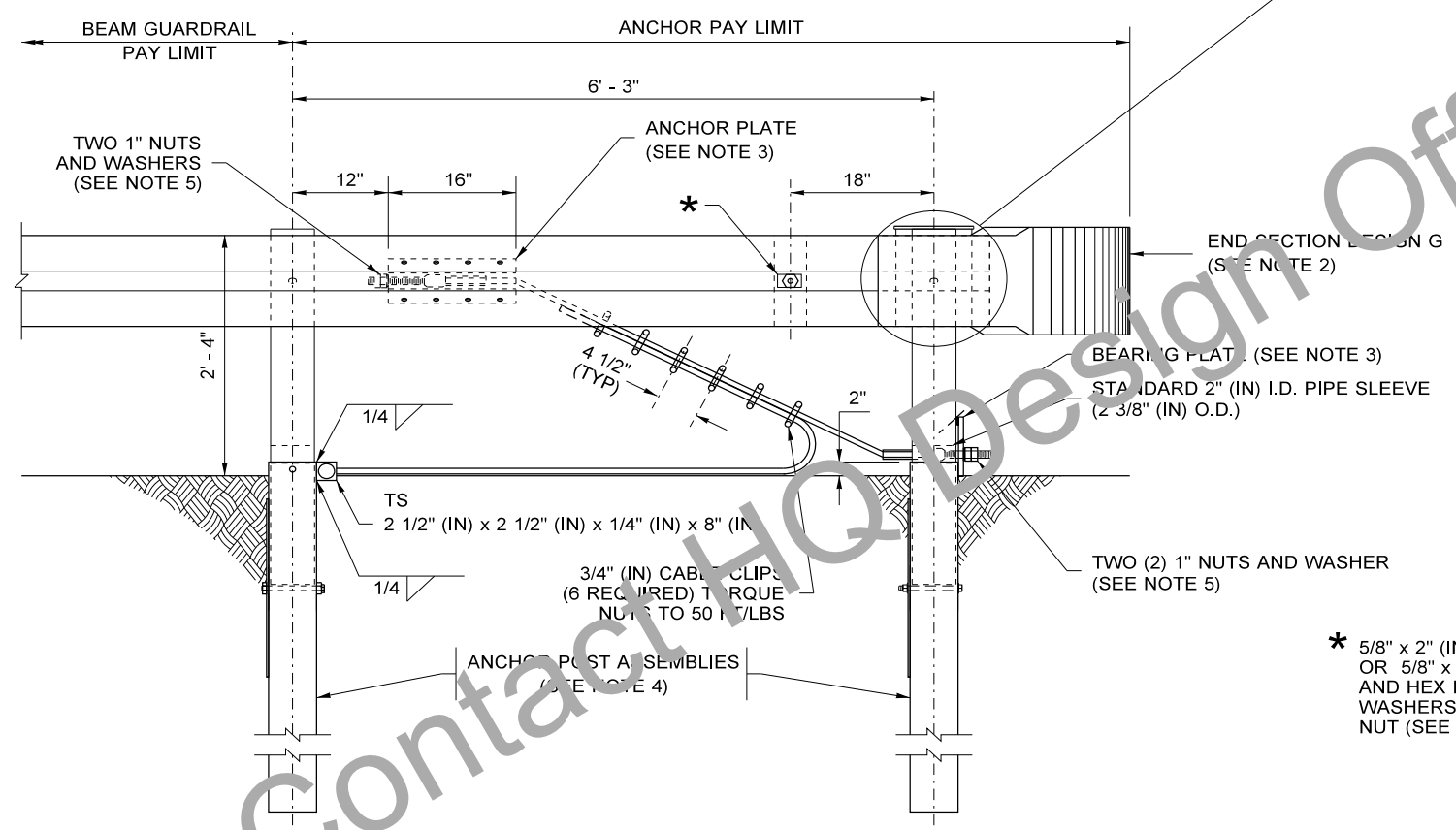


- NOTES**
1. ATTACH W-BEAM TO STEEL PIPE WITH 5/8" (IN) X 1 1/4" (IN) BUTTON HEAD BOLT WITH NO WASHER. NO CONNECTION TO THE POST IS REQUIRED.
 2. FOR END SECTION DETAILS SEE **STANDARD PLAN C-7**.
 3. FOR ANCHOR DETAILS SEE **PLAN TB-C6**.
 4. FOR POST DETAILS SEE **STANDARD PLAN C-1B**.
 5. OUTSIDE NUT SHALL BE TORQUED AGAINST INSIDE NUT A MINIMUM OF 100 FT/LBS.



TYPE 5 ANCHOR

BEAM GUARDRAIL TYPE 5 ANCHOR

| | | | | | | | | |
|---------------|--|------|----|----------------|-------|------------------|--|---------------------------------|
| FILE NAME | S:\Design R P & S\4-Standards\2-Plan Sheet Library\02-PSL Work in Progress\C series conversion\TB-c6d\TB-c6d.dgn | | | REGION NO. | STATE | FED.AID PROJ.NO. | Washington State Department of Transportation | Plot 1 |
| TIME | 10:35:59 AM | | | 10 | WASH | | | PLAN REF NO TB-C6d |
| DATE | 7/31/2018 | | | JOB NUMBER | | | | SHEET 1 OF 1 SHEETS |
| PLOTTED BY | liddelf | | | CONTRACT NO. | | LOCATION NO. | | |
| DESIGNED BY | | | | | | | | |
| ENTERED BY | | | | | | | | |
| CHECKED BY | | | | | | | | |
| PROJ. ENGR. | | | | | | | | |
| REGIONAL ADM. | REVISION | DATE | BY | P.E. STAMP BOX | DATE | P.E. STAMP BOX | DATE | |